

DECISION LINE

PRESIDENT'S MESSAGE



President Hartley Shares Some 2019 Conference Highlights

Our 50th Anniversary celebration in New Orleans is almost here! Join us as we travel back to 1969 and revisit our humble beginnings as well as honor those who charted our path forward. With 1674 presentations and over 40 workshops on research, teaching and learning and professional development, I am confident the conference will be interesting and inspirational! >> More

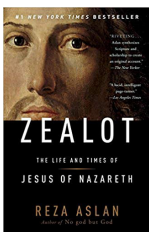
ANNUAL CONFERENCE



2019 Conference Schedule Packed with Special Events

This year DSI takes our traditional Welcome Reception to a new level! Instead of the usual host hotel location, this event will celebrate our conference roots at Mardi Gras World, a working design and art studio for parade floats and costumes. >> More

FROM THE BOOKSHELF



Book Review for "Zealot: The Life and Times of Jesus of Nazareth (2013)" by Reza Aslan, Reviewed by Mehmet Yalcin

"From the human perspective, there are always at least two orthogonal sides to a story. If you think this statement does not make sense, you might just be strengthening its argument." >> More

FROM THE REGIONS



Regions Share Call for Papers; MWDSI Recaps 2019 Conference

DSI regions gear up for their 2020 conferences with Call for Papers already open and submission deadlines drawing near. MWDSI held its 2019 conference in Indianapolis, IN with a successful one-day conference at Butler University. >> More

CONTENTS

- 3** President's Letter
Message from DSI President Hartley
- 4** From the Editor
Maling Ebrahimpour provides an overview of this issue.
- 23** From the Regions
Updates from DSI Regions
- 34** Regional Officers
- 36** Open Academic Positions
- 40** Past Presidents
- 41** DSI Fellows
- 42** Calendar
- 42** DSI Membership Rates

SPECIAL REPORTS

- 6** 2019 DSI Annual Conference Details
- 10** 2019 Consortia Update
- 15** Be a Conference Buddy
- 16** DSI Board Update
- 17** DSI Members in the News
- 18** From the Bookshelf – Book Review for "Zealot: The Life and Times of Jesus of Nazareth (2013)"

CONTENTS

2019-2020 DECISION SCIENCES INSTITUTE OFFICERS

President

Janet Hartley, Bowling Green State University

President Elect

Vijay Kannan, Utah State University

Immediate Past President

M. Johnny Rungtusanatham, The Ohio State University

Vice President for Finance (Treasurer)

Alan Mackelprang, Georgia Southern University

Secretary

Anthony Ross, University of Wisconsin-Milwaukee

Functional Vice Presidents:

Vice President for Global Activities

Wendy Tate, University of Tennessee - Knoxville

Vice President for Marketing

David Dobrzykowski, Bowling Green State University

Vice President for Member Services

Shanan Gibson, Texas A&M University

Vice President for Professional Development

Sriram Narayanan, Michigan State University

Vice President for Publications

Shawnee Vickery, Michigan State University

Vice President for Technology

Natalie Simpson, University at Buffalo-SUNY

Vice President for the Americas Division

Peggy Daniels Lee, Indiana University

Vice President for the Asia-Pacific Division

EB Khedkar, Ajeenkya DY Patil University

Vice President for the European Division

Carmela di Mauro, Università di Catania

Executive Director

Vivian Landrum, University of Houston

Decision Sciences Journal Co-Editors

Cheri Speier-Perro, Michigan State University

Mark Ferguson, University of South Carolina

Decision Sciences Journal of Innovative Education

Editor

Matthew Drake, Duquesne University

Decision Line Editor

Maling Ebrahimpour, University of Rhode Island

2019 Program Chair

Kevin Linderman, University of Minnesota-Twin Cities

2019 Associate Program Chairs

Carmela Di Mauro, University of Catania

Dongli Zhang, Fordham University

Thomas Kull, Arizona State University

Annual Meeting Webmaster and CMS Manager

Stephen Ostrom, Arizona State University

Regional Presidents

European

Jan Olhager, Lund University

Indian Subcontinent

M.P. Jaiswal, Indian Institute of Management

Midwest

Sanjay Kumar, Valparaiso University

Northeast

Douglas Hales, University of Rhode Island

Southeast

Tobin Turner, Presbyterian College

Southwest

Khaled Alshare, Qatar University

Western

Omer Benli, California State University - Long Beach

DECISION LINE is published five times a year by the Decision Sciences Institute to provide a medium of communication and a forum for expression by its members, and to provide for dialogue among academic and practitioner members in the discipline. For more information about the Institute, please call 713-743-4815.

News Items: Send your news items and announcements to the editor at the address below.

Advertising: For information on agency commissions, annual contract discounts, and camera-ready copy, contact the managing editor. Market-place classifieds (job placement listings) are \$60 per 50 words.

Membership Information/Change of Address:

Contact the Decision Sciences Institute (DSI), University of Houston 4750 Calhoun Rd, Room 325A, Houston, TX 77204-6021; Phone: 713-743-4815, info@decisionssciences.org

Website: Decision Line feature articles and more information on the Decision Sciences Institute can be found on the DSI website at www.decisionssciences.org

Editor: Maling Ebrahimpour, College of Business, The University of Rhode Island, 7 Lippitt Road, Kingston, RI 02881; mebrahimpour@uri.edu

President: Janet Hartley, Bowling Green State University

Executive Director: Vivian Landrum, University of Houston; vlndrum@bauer.uh.edu

ISSUE MONTH	DEADLINES FOR AUTHORS
January issue	December 10th (prior year)
March issue	February 10th
May	April 10th
July issue	June 10th
October issue	September 10th

VISION STATEMENT

Decision Sciences Institute will be recognized globally as a scholarly professional association that creates, develops, fosters and disseminates knowledge to improve managerial decisions.

MISSION STATEMENT

Decision Sciences Institute provides forums to create, disseminate and use knowledge to improve managerial decision making involving systems and people.



Janet Hartley
2019 - 2020 DSI
President

Our 50th Anniversary celebration in New Orleans is almost here! Join us as we travel back to 1969 and revisit our humble beginnings as well as honor those who charted our path forward.

The 2019 conference team, Kevin Linderman Tom Kull, Carmela Di Mauro, and Dongli Zhang have put together an excellent program on the theme of Transforming Decision Sciences through Emergent Technologies.

With 1674 presentations and over 40 workshops on research, teaching and learning and professional development, I am confident the conference will be interesting and inspirational! I want to note a few of the highlights of this year's conference. Be sure to check out the complete schedule on the DSI website.

- The keynote addresses, Strategy and Structure: Visualizing Complex Ecosystems on Saturday and Technology Powering the Evolution of Supply Chain Financing on Sunday will be immediately followed by interactive workshops that will allow you to explore how to integrate the concepts into your research.
- Join Editors Cheri Speier-Pero and Mark Ferguson and this year's Decision Sciences best paper finalists at 1-2:30 pm Sunday afternoon to gain insights on what it takes to develop an award winning research article.
- Meet 11 editors and associate editors of top journals including Journal of Operations Management, Journal of Supply Chain Management, Journal of Business Logistics, and MIS Quarterly on Monday at 8 am.
- Stay on the cutting edge in teaching and learning in data driven decision-making during 13 sessions organized by the Data, Analytics and Statistics Instruction Special Interest group.
- Do you teach students globally? Five experienced educators will share their insights and strategies for

effective instruction in the Teaching in the Global Context workshop offered on Sunday at 2:50 pm.

- Get a behind the scenes look at how those iconic Mardi Gras floats are made during the Welcome Reception on Saturday from 6:30-8:30 pm. Transportation to and from the hotel is provided.
- When we come together at the Sunday's President's Reception and Dinner Banquet, we will celebrate our past, present and future in true DSI style with a special nod to our founding members and past leaders. We will also recognize the 2019 DSI Fellows, Lifetime Distinguished Educator, and Dennis E. Grawoig Distinguished Service Award recipients.

Note, as you are making your travel plans, remember the conference is scheduled from 8 am on Saturday Nov. 23 until 6 pm on Monday Nov. 25, with sessions scheduled throughout.

Stay connected with DSI throughout the year by participating in one of the four US regional conferences planned by SEDSI (Feb. 12-14), SWDSI (March 11-14), NEDSI (March 26-28), and WDSI (April 7-10) or the international conferences planned by ISDSI (Dec 27-30) and EDSI in June 2020. Our regional and international conferences play a critical role in providing a venue for networking and facilitating knowledge.

The continued success of DSI depends upon you. Consider sharing your time and expertise by serving on a DSI committee. The term of the committees begins in May. If you are interested in getting involved, contact me at jhartle@bgsu.edu or President-Elect Vijay Kannan at Vijay.Kannan@usu.edu.

Janet Hartley

DSI 2019-2020 President



Maling Ebrahimpour is the Dean and Professor of Supply Chain in the College of Business at The University of Rhode Island. He is an active researcher and has authored or coauthored over 100 articles that have been published in scientific journals and proceedings. Most of his work focuses on various issues of quality in both service and manufacturing companies. He received his PhD in business administration from University of Nebraska-Lincoln and has served on the editorial review board of several journals, including *Journal of Quality Management*, *Journal of Operations Management*, and *International Journal of Production Research*. mebrahimpour@uri.edu

Dear readers, as you read this issue of the Decision line, you will notice that the emphasis is on the Annual Conference in New Orleans that coincides with the DSI's 50th Anniversary. By now, you are ready and packed and counting days for this year's special annual conference celebrating DSI's Golden Anniversary. The program committee has complied a group of track chairs that have done a marvelous job of putting together a most wonderful program, both in terms of scientific activities as well as new and different social events celebrating our Golden Anniversary. Please read this issue of Decision Line and learn about so many powerful sessions that have been organized by the program committee. President Hartley, DSI Board, Organizing Committee, and I are looking forward to seeing you at this event that highlights the collective efforts of the organizing team and all members who have contributed to this year's conference.

In her message to our membership, President Hartley encourages you all to participate in this year's conference and she shares with you some of the highlights of the conference. Furthermore, she asks the members to be active and participate by serving in various committees and sharing your thoughts and ideas with the board and other officers of DSI.

We invite you to be a DSI Conference Buddy. Please read the short segment in this issue to learn more about this. In addition, there is news from various regions and call for papers. We hope that these will intrigue your curiosity and you will plan to attend one or more of these regional meetings.

DECISION LINE FEATURE EDITORS:

Dean's Perspective, Maling Ebrahimpour, University of Rhode Island mebrahimpour@uri.edu

Doctoral Issues, Varun Grover, University of Arkansas, vgrover@uark.edu

Ecommerce, Kenneth E. Kendall, Rutgers, The State University of New Jersey ken@thekendalls.org

From the Bookshelf, Feature Editor, Mehmet G. Yalcin, University of Rhode Island, mgyalcin@uri.edu

In the Classroom, Kathryn Zuckweiler, Midwestern State University of kathryn.zuckweiler@mwsu.edu

Analytics and Data Science, Subhashish Samaddar, Georgia State University, s-samaddar@gsu.edu

Information Technology, Silvana Trimi, University of Nebraska-Lincoln, silvana@unl.edu

In the News, Vivian Landrum, Decision Sciences Institute, vlandrum@bauer.uh.edu

International Issues, Minoo Tehrani, Roger Williams University, mtehrani@rwu.edu

Membership Roundtable, Gyula Vastag, National Szechenyi University gvastag@gmail.com

Supply Chain Management, Daniel A. Samson, University of Melbourne, Australia d.samson@unimelb.edu.au

Research Issues, Mahyar Amouzegar, University of New Orleans, mahyar@uno.edu

DSI's Executive Director, Vivian Landrum, provides an update from DSI board and committees. Please read her update as it contains a lot of important information about DSI and its various regions.

DSI member stories tell you about Ken and Julie Kendall's adventure in the world of theater where they helped a theater company to relocate from New Orleans to the Philadelphia area. They talk about how Ken played a vital role in the rebirth of this theater due to his experience serving as the president of DSI. A short but interesting story about an indirect influence of experience gained through serving DSI.

Mehmet Yalcin, the Feature editor of From the Bookshelf, has reviewed a book titled *Zealot: The Life and Time of Jesus*

CONT. FROM PG. 4

of Nazareth by Reza Aslan. Yalcin identifies three intriguing main points in this book. They are: Author's passion about the subject matter, the value of archival data in researching difficult matters, and the most intriguing of all - that everything has a supply chain including religion.

This is a very interesting book and I highly encourage our readers to read the book review, and if they find it interesting, to read the book.

As always, I encourage you, our reader,

to share your opinions, ideas with us by sending them to me at mebrahimpour@uri.edu, or you may send them to the feature editors as shown in this section.

I am looking forward to reading your articles for inclusion in Decision Line.

Maling Ebrahimpour, PhD
Editor

THE 50TH ANNUAL CONFERENCE OF THE DECISION SCIENCES INSTITUTE

New Orleans, LA
November 23 – 25, 2019

***Transforming Decision Sciences through
Emergent Technologies***

By Vivian Landrum, Executive Director

DSI's 2019 Annual Conference will take place November 23 - 25 at the New Orleans Marriott, New Orleans, LA. The theme for this year's conference is ***Transforming Decision Sciences through Emergent Technologies***. We will be celebrating 50 years of service and have several special events planned. If you are on the fence about whether to attend, read on!

This year the conference features 27 tracks, four consortias, over 40 workshops and panels, competitions, a NASA plant tour as well as keynotes, awards and receptions. This year there are several new research tracks and many interesting and informative professional development workshops offered. To view the entire schedule visit the DSI homepage at decisionsciences.org. For more detailed information on

all things happening, visit the conference webpage at <https://decisionsciences.org/annual-meetings/national-dsi/>.

SPECIAL EVENTS

**DSI Welcome Reception,
Saturday November 23, 6:30
– 8:30 pm**

We are in New Orleans to celebrate, correct? What better way to do this than tie into the theme of the city. This year DSI takes our traditional Welcome Reception to a new level!



Instead of the usual host hotel location, this event will celebrate our conference roots at Mardi Gras World, a working design and art studio for parade floats and costumes. Mardi Gras World was conceived by Roy Kern, a local artist and sign painter who began designing parade floats in 1932. Kern Studios was founded in 1947 and he became New Orleans leading parade designer and builder. In 1984, after so many requests for private tours, Mardi Gras World was opened to the public to provide visitors a behind-the-scenes look at the huge colorful floats and larger-than-life props seen during the Big Easy's unforgettable parades.

Attendees will have the opportunity to take pictures, visit with docents and artists and stroll the aisles of floats and props during this two-hour reception. Drinks and light hors d'oeuvres will be offered as attendees will be able to network with colleagues in a fun, Mardi Gras style atmosphere! Transportation will be provided to/from the hotel starting at 6 pm. It's a short distance to Mardi Gras World, but it is not walkable, due to roadways and traffic. Our comfortable bus transportation will be the best way to get there.

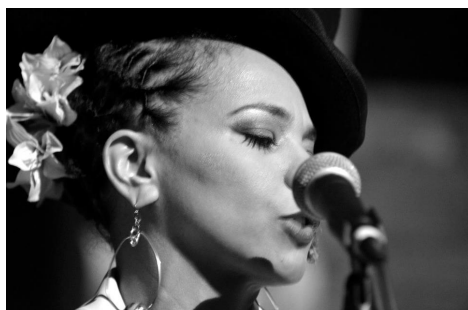
**President's Reception and Dinner Banquet, Sunday
November 24, 6 – 9 pm**

You will not want to miss this very special evening, as DSI celebrates its history, accomplishments and future. The President's Reception, taking place from 6 – 7 pm offers attendees time to mingle and reconnect



CONT. FROM PG. 6

with friends, old and new. Dinner will commence at 7 pm. A change from last year, this year the distribution of awards and recognitions will take place over two days. Institute awards and recognitions, such as the Fellow announcement, the Dennis E. Grawoig Distinguished Service Award, the DSI Lifetime Distinguished Educator Award and the Carol J. Latta Memorial DSI Emerging Leadership Award will take place during this evening banquet. A special video will be presented sharing DSI's past, present and future. All conference awards will be presented at the Monday luncheon.



Guests will want to stay after the program concludes as Alicia Renee and her Blue Eyes Quartet will be providing entertainment for dancing or just enjoying some great jazz music. Alicia Renee's voice has been described as a mix of

Amy Winehouse, Aretha Franklin and Whitney Houston. VIBE magazine is quoted as saying, "people are calling her the next Billie Holiday." Quincy Jones describes Alicia as "A beautiful voice, full of talent for years to come."

DSI Luncheon Hosted by the Fellows, Monday November 25, 11:30 am – 1 pm

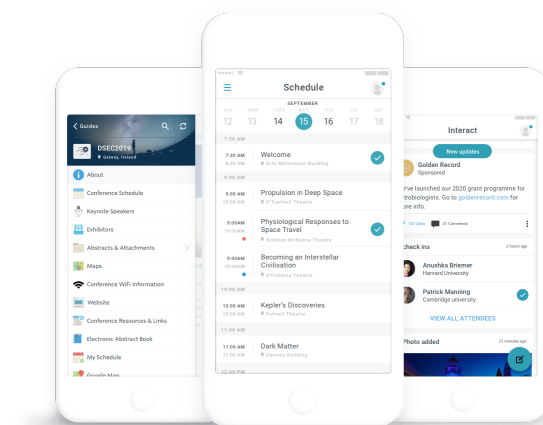
At this luncheon, winners of the conference awards will be announced and recognized. This includes all Best Paper awards as well as the Buffa Doctoral Dissertation Award, the Instructional Innovation Award and the PMI Instructional Case Writing Competition award winner. Be sure to make plans to attend the entire conference – from Saturday thru Monday afternoon!

REMEMBER – all these events are included in your conference registration fee!

MOBILE CONFERENCE APP

Following the success of last year's debut, DSI's mobile conference app allows for real-time connections

and communication. Attendees will be able to download the schedule that stays accessible even without wi-fi. A personalized itinerary can be created as well. All data is available, including submissions, authors and sessions. Instant notifications can be sent out whenever there is a change of plan. Attendees will be able to make connections, send private messages and create posts. With the use of this app, the hard-copy program will not include reprints of abstracts as they can be found in the app. Thus the program will contain far fewer printed pages. DSI is proud to move in an eco-friendly direction! Once the app is available, all attendees will be sent an email to remind everyone to download the app before the conference. The app is scheduled to be opened at least one week prior to the conference.



NASA MICHLOUD ASSEMBLY PLANT TOUR

DSI is proud to offer a limited opportunity to tour the NASA Michoud Assembly Facility in New Orleans, which is a world-class manufacturing facility providing vital support to NASA exploration and discovery missions. Michoud is unique in that it contains one of the largest production buildings in the nation. This tour was limited to 45 participants and was offered on Friday, November 22 on a first-come, first-serve basis. It quickly sold out with a wait list as well. Unfortunately there is no longer an opportunity for anyone who has not already signed up for this tour. For those lucky 45

CONT. FROM PG. 7

who made the cut – you will be provided more information on where to meet, etc. closer to the event.

CONFERENCE SCHEDULE

Friday, November 22

Conference Registration opens at 12 noon. Make plans to check into the host hotel and then take advantage of the nearby activities and restaurants available. The Nasa Michoud Plant Tour will take place from 12 noon – 5 pm. Meet in the hotel lobby.

Saturday, November 23

Conference registration will open at 7 am. The conference officially opens with presentations, workshops and consortia starting at 8:00 am and a variety of educational Exhibitors opening at 9 am. **The first keynote speaker will present. Rahul Basole**, Managing Director & Global Lead, Visual Data Science, Accenture will offer his keynote entitled: Strategy and Structure: Visualizing Complex Ecosystems from 1 – 2:30 pm

in Galerie 2. **A New Member Welcome Reception** will take place from 5 – 6 pm in the Riverview I area on the 41st Floor with hosted beverages and offers an intimate networking opportunity for newly joined DSI members to meet and connect with contemporaries before the larger Welcome Reception. New Member ribbon required for entrance. Finally, greet old colleagues and meet new ones while enjoying savory food and drink at the **DSI Welcome Reception** beginning at 6:30 pm at Mardi Gras World. Bus transportation will be provided to/from the event.

Sunday, November 19

Another full day in store with the **2nd keynote by Anubhav Shrivastava**, Finance Head, Citibank NA and **Dale Rogers**, ON Semiconductor Professor of Business at Arizona State University. Their keynote *Technology Powering the Evolution of Supply Chain Financings* begins at 10 am in Galerie 2.

The **President's Reception** will start at 6 pm in Bisonet/Carondelet with the **Dinner Banquet** imme-

CONFERENCE REGISTRATION

Registration

Registration is open online.

	Regular	Late/Onsite
Deadline/ Register by	Oct. 28	Oct. 29-Nov 25
Regular: Domestic/International	\$550	\$600
Emeritus	\$250	\$275
Student	\$160	\$185

As a reminder, attendees of the DSI Annual Conference are required to be Decision Sciences Institute members as of the date of the conference. To join DSI or renew your DSI membership, please go to www.decisionsciences.org. Note: DSI members coming into the new member management system for the first time will need to Create Your Account first. This will allow the GrowthZone system to locate your existing record and allow you to set up your password. Members who

need to renew will find their renewal invoice in their Accounts tab located in their Info Hub. DO NOT JOIN AGAIN IF YOU HAVE A CURRENT MEMBERSHIP. To renew, you must pay the invoice already in your account. If your account is more than two months past due, your membership has expired. To reactivate, then you must Join again and your old and new records will be merged. Please contact the Home Office with any questions.

CONT. FROM PG. 8

diately following at 7 pm. Enjoy sumptuous food and drink at this gala dinner which will recognize Institute award recipients as well as celebrate DSI's past, present and future. Featured entertainment, Alicia Renee, will perform with her jazz band.

Monday, November 20

Be sure to attend the **DSI Annual Business Meeting** from 7 - 8 am on Monday morning in Galerie 1. President Hartley will provide an update on DSI activities and share the DSI vision going forward.

This is the last day of sessions, exhibitors, meetings and interviews. A seated **luncheon, hosted by the DSI Fellows**, will begin at 11:30 am in Carondelet with the conference awards handed out. All finalists and competition winners are expected to attend. Remember sessions continue through to 6 pm on this day!

HOTEL RESERVATIONS

Deadline of October 31 to Receive Rate of \$190

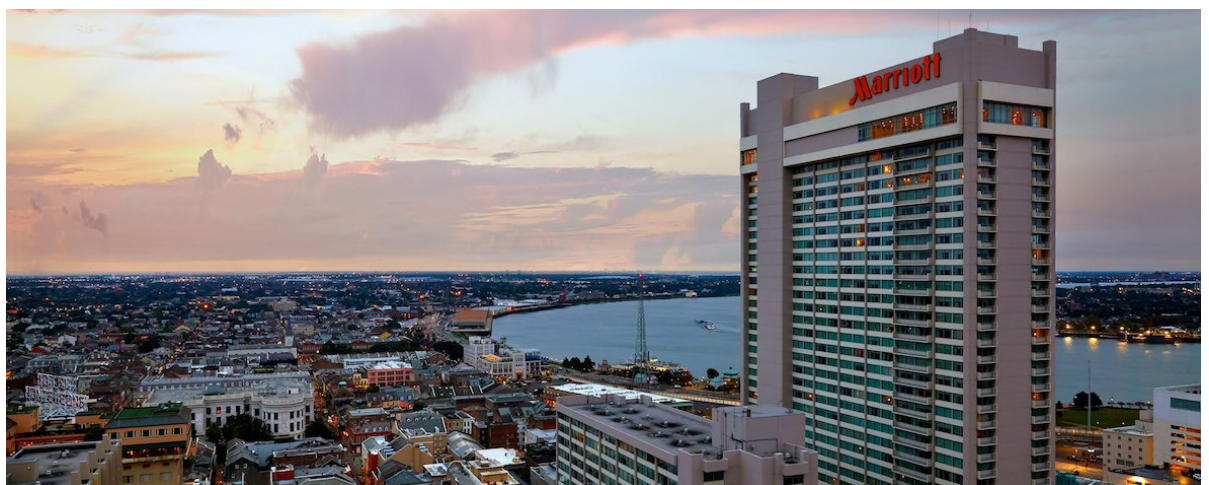
The host hotel for the 50th Annual Meeting is the New Orleans Marriott, located at 555 Canal Street, New

Orleans, LA 70130. This hotel overlooks the French Quarter and the Mississippi River. The hotel is a 42 story, 449 (137 m)– tall skyscraper and is the seventh tallest building in New Orleans. The DSI contracted nightly room rate is \$190 per night for a single or double occupancy.

Register early to receive the greatest value. When making your hotel reservations for the conference, use the secure online reservation portal found on our DSI website. We are aware there may be other online booking sites that may offer a slightly lower rate than our contracted \$190 per night rate. However be sure to book your stay at the host hotel, the New Orleans Marriott, as transportation to/from the hotel may make it more costly. In addition, DSI is committed to a specific block of rooms and will be required to pay penalties if the quota is not met.

Reservations must be made by October 31 to receive the contracted rate. Visit the DSI website and make your reservations today.

We look forward to seeing you there!



CONSORTIA

The 2019 DSI Annual Conference offers two half-day doctoral consortia for Ph.D. students in different stages of completion – **Doctoral Student Consortium for Pre-Proposal Defense Stage Students** and **Doctoral Student Consortium for Post-Proposal Defense Stage Students**. In addition, two half-day faculty development consortia are also offered for those in different stages of their career – **New Faculty Development Consortium** and **Mid-Career Faculty Development Consortium**.

Participants of the consortia are invited to a luncheon co-hosted by Alpha Iota Delta and will receive certificates. Although the stated deadline to apply has passed, some of the consortia coordinators will continue to accept applications until October 20. If you would like to participate in one of the below consortia, please contact the Home Office at info@decision-sciences.org.

PRE-PROPOSAL PHD. STUDENT CONSORTIUM

Coordinator: Cindy Wallin Blair,
Brigham Young University

Purpose

The Doctoral Student Consortium for Pre-Proposal Defense Students is designed to help guide students in early stages of doctoral programs and prepare them for the dissertation stage. The consortium will incorporate topics ranging from the initial selection of specialization areas and supporting methodological tools to identifying dissertation topics and advisors. A unique aspect of all discussions in this consortium will be the infusion of a solid dose of realism and pragmatism from highly regarded and established scholars in navigating the journey from Ph.D. student to Ph.D. candidate and beyond.

Our goal is to help doctoral students succeed in their doctoral programs and future academic careers. The format will be panel presentation and open discus-

sion. Above all, the Doctoral Student Consortium for Pre-Proposal Defense Students will provide an initial venture into activity with the Institute and an opportunity to begin networking with your colleagues from other universities.

Program

SESSION 1

The Ph.D. Roadmap: Knowing What to Expect in the Months and Years Ahead

Expectations and time commitments for Ph.D. students are among the first hurdles that must be navigated in doctoral programs. Class time, class preparation, meetings with faculty, outside research projects, preparing for the dreaded comprehensive exam, teaching or research assistant commitments and life in general will fill time quickly. Decisions made early can affect the course of the entire program and even the early career of an academic, so it is important to plan carefully early in the doctoral program. The focus of this session will be on prioritizing activities, time management, and understanding the impact of decisions over time.

Panelists

Barry Brewer, University of Wyoming
Heather Lutz, Penn State University
Mikaella Polyviou, Arizona State University

SESSION 2

Course Selection: Subject Areas and Methodological Tools

Determining areas of specialization and making specific course selection decisions will play a major part in preparing a PhD student for comprehensive exams and providing ideas for potential dissertation topics.

Each program will have a unique structure and will provide a roadmap of courses and program requirements that will guide you through much of the process. Many programs will have core courses designed

CONT. FROM PG. 10

to prepare students for areas of specialization in line with faculty expertise. They may also have specifically defined research methodology areas that support their type of research. If so, identifying elective courses that match your interests should be your focus. If not, then it is even more important that you take the course selection process seriously and possibly supplement with independent study courses to increase your potential for success. It is important that your choice of research methodologies, which will become your “tool kit” for several years, fits the expectations of your future research and the journals where you expect to publish.

Panelists

Sean Wan, The Ohio State University
 Deepa Wani, University of Texas at San Antonio
 Robert Wiedmer, Arizona State University

SESSION 3

Entering the Dissertation Stage: Planning Topics, Committee Members and a Timeline

The topic selection and completion of your dissertation will do more than complete your degree requirements. It will be front and center in your job search (both the topic and your timeline) and will be fundamental in setting you up for success early in your academic career. It is apparent that your chosen topic must be your academic and intellectual passion. You will be doing research in this area for years in the future, both while you remain in the Ph.D. program and during the early stages of your professional career. Second, your committee members must like your topic. If not, the hurdle you are navigating will be more difficult. Third, the profession must like your topic. Since this topic will be with you well into the future, it isn't enough that the topic is of interest now, it must also be of interest for several years after you complete your program to help you get that coveted tenure-track position and to continue to publish in the journals that will be crucial to achieving tenure.

Panelists

Bryan Ashenbaum, Miami University



Simone Peinkofer, Michigan State University
 Matthew Schwieterman, Miami University

SESSION 4

Tying it all Together: Time Management, Program Management, and Career Management

In this session we will bring everything back together and share our experiences that worked, along with some that didn't. We will also cover more general topics like preparing for comprehensive exams and opportunities for involvement with the Institute. Most importantly, we will address questions and concerns you have about doctoral programs that have not been addressed in the earlier sessions

Panelists

Mike Dixon, Utah State University
 Yingchao Lan, University of Nebraska-Lincoln
 Bill Sawaya, Bowling Green State University

Summary and Concluding Remarks

POST-PROPOSAL PHD. STUDENT CONSORTIUM

Coordinator: Yan Dong,
 University of South Carolina

Purpose

The PhD Students Consortium Post-Proposal Defense Stage is offered to those who are closing in to the final stage of their doctoral studies (normally

CONT. FROM PG. 11

within 1-2 years from graduation). Students pursuing their doctorates in decision sciences, operations management, management information systems, management science, and related business fields are all welcome. The Consortium will include focused and interactive sessions centering on student placement and job market.

Program

SESSION 1

Attending Conferences as A PhD Candidate: for every senior PhD student, the first steps in preparing for the job market involve understanding faculty, programs, and fellow students at other schools, and creating and enhancing visibility among potential employers. Attending annual conferences is an important part of the process toward the hiring season. This session will provide valuable insights into expectations, dos and don'ts, and approaches of attending conferences before and during this crucial time.

Panelists

Alan Machelprang, Georgia Southern University
Jason Miller, Michigan State University
Erin McKie, Ohio State University

SESSION 2

Preparing for Conference Interviews: conference interviews are short and intense, but also a critical process leading to opportunities in a successful job search. Candidates need to be highly focused and engaging to grasp attention and advance interest from the interviewers. This session will focus on the entire preparation process for conference interviews, from how to dress, to how to ask questions, and to how to follow up. We will also discuss effective strategies in this session.

Panelists

Joy Field, Boston College
Suvrat Dhanorkar, Penn State University
Sining Song, University of Tennessee

SESSION 3

Going on the Campus Interview: finally, all the past efforts lead to campus fly outs, where candidates will meet the whole department up close and personal. You know your stuff, but you also need to know how to handle yourself in a variety of situations. The objective of this session is to help students prepare for the final challenge in their job search—to show strong interests, to demonstrate collegiality, and to leave a good impression with your work and personality.

Panelists

Anant Mishra, University of Minnesota
Tingting Yan, Wayne State University
Stephanie Eckerd, Indiana University

Conclusion and Wrap Up

NEW FACULTY DEVELOPMENT CONSORTIUM

Coordinator: Yi-Su Chen,
University of Michigan - Dearborn

Purpose

The New Faculty Development Consortium is a program intended for faculty who are holding tenure-track positions in the initial stage of their academic careers, defining as faculty who received their doctorate degrees in the 2017 or 2019 and/or started their tenure-track position in AY2018 or after. The program has five sessions: the first four sessions focus on experience sharing whereas the last one is a workshop for participants to take away with some solid outputs. We invite you to participate in the NFDC to gain insights into how to launch and sustain a successful professional career in academe.

Program

SESSION 1

Opening: Introduction and FAQ's answered. FAQ's are collected from applicants' submissions.

CONT. FROM PG. 12

SESSION 2

Now and forever? Panel discussion from “new-ish” assistant and associate professors on surviving the first year while searching successfully for another tenure-track position in a different institution.

Panelists

Alex Scott, Michigan State University
Xiang (Sean) Wan, The Ohio State University

SESSION 3

Panel discussion from newly tenured (1~2 years) associate professor on surviving the tenure process.

Panelists

Brent Moritz, Penn State University
Jian-yu (Fisher) Ke, California State University – Dominguez Hill

SESSION 4

Panel discussion from senior tenured associate and full professors about work-life balance, including but not limited to having a working spouse (potentially in academic as well) and career paths regarding research and administration. One of the panelists is Department Chair who will also share advice with new faculty from a department head's viewpoint.

Panelists

Chanchai Tangpong, North Dakota State University
Rachna Shah, University of Minnesota

SESSION 5

Welcome remark by DSI President and DSI President-

Elect on the value of DSI membership in advancing academic career.

Panelists

Janet Hartley, Bowling Green State University
Vijay Kannan, Utah State University

SESSION 6

“Speed dating” style roundtable workshop. Each participant will choose to attend two of three offered topics, spending 30 minutes at each table.

Roundtable Topic 1 – Write your research statement for the most impact for annual review, contract and/or P&T dossier.

Facilitators

Sean Wan, The Ohio State University
Rachna Shah, University of Minnesota

Roundtable Topic 2 – Design your first course syllabus to avoid bad evaluation, etc.

Facilitators

Alex Scott, Michigan State University
M. Johnny Rungtusanatham, York University

Roundtable Topic 3 – Classroom management tips – first time teaching MBA, Is it okay to say “I don’t know, etc.

Facilitators

Mikaella Polyviou, Arizona State University
Ken Hung, Suffolk University
Chanchai Tangpong, North Dakota State University

Wrap-Up

MID-CAREER FACULTY DEVELOPMENT CONSORTIUM

Coordinator: Amit Eynan,
University of Richmond

Purpose

The consortium is designed for faculty who have received tenure within the last few years. At this stage faculty are presented with new opportunities to enhance their career and contribute to their institutions and the profession. It is important to understand the potential impact of such opportunities on ongoing activities as well as career aspiration.

During the consortium, dedicated faculty will share their extensive experience and insight to foster informal and candid discussions regarding potential career paths including opportunities and challenges of taking on new roles in academic administration, spearheading academic endeavors, and leadership in professional organizations while continuing to develop their research and pedagogical agendas.

Program

SESSION 1

Managing Career and Administration

Post tenure many new opportunities become available, expected and even required. In the consortium we will explore many of these options and their short and long term impact. In this session we will focus on academic leadership to reveal what it takes and to better understand which roles are better fit for you and when is the right time.

Panelists

Vidya Gargeya, University of North Carolina
Nicholas Petrucci, Pennsylvania State University

Session 2

Managing Career and Initiatives

In this session we will discuss alternative opportunities to enhance one's career in order to remain engaged and motivated for many years through development of

comprehensive programs and courses. In this session we will look at the skills and activities that are required to lead such initiatives.

Panelists

Laura Birou, Florida Gulf Coast University
Subhashish Samaddar, Georgia State University

SESSION 3

Professional Society Service and Leadership

Our professional societies are important and necessary entities to enrich their members and advance the profession. The societies rely on members to contribute in many ways. In this session we will review various opportunities to get more involved in the societies, how to engage, what it takes as well as the benefits.

Panelists

Vijay Kannan, Utah State University
Nada Sanders, Northeastern University

SESSION 4

Alumni's Reflections

"Graduates" of previous Mid-Career Development Consortium will reflect on their experience; how the consortium helped them shape their views and consequently modify their career plans.

Panelists

Toyin Clotney, Iowa State University
Ying Liao, East Carolina University

Conclusions

BE A DSI CONFERENCE BUDDY

Building upon the success of the last two year's Buddy Project, you are invited to participate in this year's DSI annual conference "buddy" project. With more than 1,100 participants and myriad sessions to choose among, the annual conference can be a bit overwhelming for those new to our community. The Buddy Project is designed to welcome new members, facilitate networking and engage veteran members with those who have joined DSI during the past couple of years.

One of the most valuable attributes of DSI membership is the welcoming network of colleagues available for scholarly collaboration, pedagogical innovation and professional development. The Buddy Project lays the foundation for connecting the new generation of scholars and practitioners with the proud legacy of DSI.

Who should participate?

- New members, including student members and those who have joined DSI in the past couple of years.
- Veteran DSI members who would be interested in making new members feel welcome at the annual meeting and facilitating networking among the new members.

What would I do as part of the Conference Buddy Project?

- Attend the annual meeting!
- Conference Buddy Project participants will be invited to the New Member Reception at the annual meeting.
- Veteran members should contact their conference buddies prior to the annual meeting to introduce themselves and coordinate a time and place to meet (perhaps at the New Member Reception).
- Veteran members are encouraged to introduce new members to colleagues at the annual meeting to help expand professional networks.
- New members are encouraged to actively engage at the annual meeting by attending keynotes, meals



Shanan Gibson, Texas A&M University

and receptions, presentation sessions, and other events of interest. The Conference Buddy Project helps ensure that new members have a group of new colleagues with whom to attend events.

Does the Conference Buddy Project extend beyond the annual meeting?

- While conference buddies are not required to stay in contact after the annual meeting, many veteran members attest to the quality of networks they have built over the years through DSI. We hope this project helps new members accelerate the development of those networks.

How do I sign up for the Conference Buddy Project?

- The DSI Home Office will send a survey link via email mid-October. Both veteran members and new members who want to participate in the Conference Buddy Project should complete the survey.
- The Member Services Committee will match new members with veteran members (typically a small group of new members to one veteran member) and email contact information to the members in each group.

Whom do I contact for more information?

- Shanan Gibson, VP of Member Services. Email: Shanan.Gibson@tamuc.edu.



At the 2018 Annual Conference new member Yibo (James) Zhang meets up with conference buddy Mark McMurtrey, then President of SWDSI.

DSI BOARD AND COMMITTEE UPDATE

By Vivian Landrum, Executive Director

Your DSI 2019-2020 Board of Directors and Committees continue to make strides in carrying out the objectives and goals of the DSI Strategic Plan.

Actions taken by the Board since its May meeting include:

1. Approval of the MWDSI, NEDSI, SEDSI, SWDSI and WDSI charters. This was critical as DSI's new Bylaws required new governing documents for the regions and divisions. Thanks go to each of the regions for working with the board to ensure these documents were completed and crafted to allow for each region's individual nuances.
2. Approval of a DSI Country Chapter template. To encourage international growth and ensure consistency among existing and future country chapters, a Country Chapter template was drafted and approved. This template will be offered to

those expressing interest in forming a new DSI chapter in other countries.

3. Approval of a DSI Divisional Charter template. Existing DSI international divisions were also required to have new governing documents per the new Bylaws. A template for existing and possible expansion to other areas is now approved.
4. Approval of amendments to SWDSI Charter. Each region and division has the right to request from the DSI Board of Directors amendments to their governing documents. SWDSI did so and the Board unanimously approved of their request to make their Board more flexible and manageable.

Your DSI Committees are hard at work finalizing their charges and preparing for their final reports to the Board. Many committees will meet at the 2019 DSI Annual Conference. If you are a committee member, please check the conference schedule to find your committee meeting date, time and location.



INTERESTING STORIES ABOUT DSI MEMBERS

Over a dozen years ago DSI Fellows Ken and Julie Kendall helped rescue a small theatre company ravaged by Hurricane Katrina as they transitioned from New Orleans to Philadelphia. Julie remarked that DSI played a significant role in this rebirth. Julie said, "Ken was the first Chairman of the EgoPo Classic Theater Board, fresh from his experience as President of DSI and I, as EgoPo Vice President, depended on what I learned as DSI Vice President at Large and Treasurer to write the EgoPo bylaws." Recently Ken and Julie celebrated because EgoPo Classic Theatre received the big one – the 2017 Barrymore Award for Outstanding Production of a Play. Ken

and Julie joined the Artistic Director and the company on stage to accept the award. Ken remarked, "As professors we feel like we are always on stage in front of an audience, but this time it was different. It was gratifying and really special."

Ken and Julie continue to support many theatres and theatre-related organizations in New York City and Philadelphia and served as official nominators of the Drama League in NYC.



DSI Past President and Fellow Ken Kendall, EgoPo Artistic Director Lane Savadove, and DSI Fellow Julie Kendall at the 2017 Barrymore Awards.

DSI MEMBER RENEWALS NOW PAID VIA INVOICE IN GROWTHZONE

The DSI member management system, GrowthZone, enables DSI to better manage and track membership renewal dates, payments and provides invoices in the member's portal for payment, download and printing. The process for member

renewal is as follows: 30 days from member renewal due date, an email is sent to the member with an invoice attached. The date of the invoice is the renewal date/deadline. Members may pay

directly from the invoice via a link embedded within. Or pay from their DSI member portal. If payment is not received by the due date, a reminder email is

sent. If payment is not received within 30 days after the renewal date, one last email is sent asking the member to confirm they wish to continue their membership and allows another seven days for a response/payment. If no response is received, it is assumed the member no longer wishes to continue as a DSI member and the membership is automatically discontinued. This will void the invoice. Should a member wish to renew at a later date, they simply JOIN again and the old record will be attached to the new membership to preserve the history.

Questions? Contact the Home Office at 713-743-4815 or email info@decisionsciences.org.



BOOK REVIEW FOR

“ZEALOT: THE LIFE AND TIMES OF JESUS OF NAZARETH (2013)”

Authored by Reza Aslan from University of California Riverside

Random House, NY Hardcover, ISBN: 978-1-4000-6922-4, 296 pages, July 2013

“From the human perspective, there are always at least two orthogonal sides to a story. If you think this statement does not make sense, you might just be strengthening its argument. If you think otherwise, this statement might just be the only thing that is closest to the Truth that exists.”

(Feature editor of from the bookshelf – Summer'16)

Today, concerns such as climate change, slave labor, environmental degradation, financial and operational stability, humanitarian efforts etc. collectively seem to warrant candid conversations and research around strong global governance by ensuring diverse and

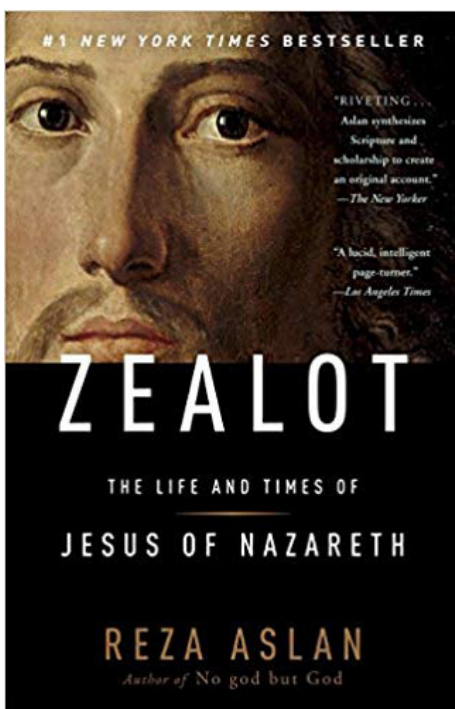
perhaps sovereign existence of nations. One of the important factors that ought to be taken into account on the path toward these conversations is religion. Traveling the maze of globalization, and within the business or the prevailing economic governance context, we may stumble upon relevant questions such as: Does money have religion? Feel free to google-scholar it as you wish but nevertheless, it is safe to assert that money and religion are related. Now, we can also question the definitions of both money and religion (i.e. some say money is religion);



Dr. Mehmet G. Yalcin is an Assistant Professor of Operations and Supply Chain Management at the University of Rhode Island, College of Business. Mehmet held various engineering and managerial positions prior to joining academia where he has been recognized with research and teaching awards. He is a certified Black Belt in Lean/Six Sigma (LSS), and Logistics, Transportation, and Distribution (CLTD) and teaches Operations and Supply Chain Management courses to students and practitioners. Dr. Yalcin's research focus is at the interface of sustainability and innovation with the focal point on Supply Chain Ambidexterity (SCX).

however, that is not the focus of this review. There are more than a few research studies done relating to economics and religion. That said, I am merely wondering if we ought to include religion, which may be perceived by many as a sensitive subject, more in our research as decision sciences scholars. Also, surrendering the touchy side to academic communities who discuss scholarly bravery and/or academic freedom issues, I simply would like to offer a small hint toward helping us act more aware about this elephant in our parlor.

Authored by Reza Aslan, “Zealot: The Life and Times of Jesus of Nazareth” was published by Random House in July 2013. My impression from reading this book was that supply chain knowledge could help explain—in a beyond-postmodern fashion—and possibly extend Aslan's work which in his words is about hoping to spread “...the good news of the Jesus of history with the same fervor that I once applied to spreading the story of the Christ”(p.xx). Aslan suggests that his “book is the result of two decades of research into the New Testament and the origins of the Christian movement conducted At Santa Clara University, Harvard University, and the University of California at Santa Barbara.” Thanking to all his professors, he singles out his “extremely patient Greek professor Helen Moritz, and my brilliant adviser, the late Catherine Bell, at Santa Clara, Harvey Cox and



Jon Levinson at Harvard, and Mark Juergensmeyer at UCSB”(p.217) besides being “grateful for many others’ unconditional support. Demonstrating his style in approaching the handling of the subject, for instance, Aslan makes sure that his “text employs C.E., or Common Era, instead of A.D. in its dating, and B.C.E. instead of B.C.” in alignment “with scholarly designations”, and “also refers to the Old Testament as the Hebrew Bible or the Hebrew Scriptures.”(p.xxi).

Without further ado, I present my observations of the book under **three main points**; however without much elaboration due to my hesitance of possible misinterpretation of the subject matter:

- i) The author is very passionate about the subject matter and it is in fact personal;
- ii) The value of archival data in researching bold/difficult matters is evident in the book;
- iii) The fact that everything has a supply chain including a major religion is a salient point.

The book is also organized under three parts and presented via fifteen chapters and an epilogue. Wrapping these are the acknowledgements, notes (fifty-four pages in smaller font size), bibliography, and an index at the end along with a map of First Century Palestine, sketch of The Temple in Jerusalem, author’s note, introduction, a very helpful and thoughtfully summarized chronology.

First point: Depicting the evangelical youth camp that he attended in Northern California as a location where “...one could not help but hear the voice of God”, the author makes it clear that the book has as much personal relevance as his academic aspirations

“The author makes it clear that the book has as much personal relevance as his academic aspirations do.”

do: “When I was fifteen years old, I found Jesus.”(p. xvii). Born into Islam, the author’s life was “scrubbed of all trace of God”(p.xviii) after the Iranian revolution forced his family to flee their home. As a fresh immigrant in America, the author was ok with this scenario because “After all, in the America of the 1980s, being Muslim was like being from Mars.”(p.xviii). “Jesus, on the other hand, was America. He was the central figure in America’s national drama. Accepting him into my heart was as close as I could get to feeling truly American. I do not mean to say that mine was a conversion of convenience. On the contrary, I burned with absolute devotion to my newfound faith. I was

presented with a Jesus who was less “Lord and Savior” than he was a best friend, someone with whom I could have a deep and personal relationship.”(p. xviii). Aslan suggests that getting ready for college, “The more I probed the Bible to arm myself against the doubts of unbelievers, the more distance I discovered between Jesus of the gospels and Jesus

of history – between Jesus the Christ and Jesus of Nazareth.”(p.xix). “Meanwhile, I continued my academic work in religious studies, delving back into the Bible not as an unquestioning believer but as an inquisitive scholar. No longer chained to the assumption that the stories I read were literally true, I became aware of a more meaningful truth in the text, a truth intentionally detached from the exigencies of history. Ironically, the more I learned about the life of the historical Jesus, the turbulent world in which he lived, and the brutality of the Roman occupation that he defied, the more I was drawn to him. Indeed, the Jewish peasant and revolutionary who challenged the rule of the most powerful empire the world had ever known and lost became so much more real to me than the detached, unearthly being that I had been introduced to in church.”

Second point: The author claims that “In the end, there are only two hard historical facts about Jesus of Nazareth upon which we can confidently rely: the first is that Jesus was a Jew who led a popular Jewish movement in Palestine at the beginning of the first century C.E.; the second is that Rome crucified him for doing so. By themselves these two facts cannot provide a complete portrait of the life of a man who lived two thousand years ago. But when combined with all we know about the tumultuous era in which Jesus lived –and thanks to the Romans, we know a great deal— these two facts can help paint a picture of Jesus of Nazareth that may be more historically accurate than the one painted by the gospels. Indeed, the Jesus that emerges from this historical exercise –a zealous revolutionary swept up, as all Jews of the era were, in the religious and political turmoil of first-century Palestine— bears little resemblance to the image of the gentle shepherd cultivated by the early Christian community.”(p.xxviii).

“And yet that best, most educated guess may be enough to, at the very least, question our most basic assumptions about Jesus of Nazareth. If we expose the claims of the gospels to the heat of historical analysis, we can purge the scriptures of their literary and theological flourishes and forge a far more accurate picture of the Jesus of history. Indeed, if we commit to placing Jesus firmly within the social, religious, and political context of the era in which he lived –an era marked by the slow burn of a revolt against Rome that would forever transform the faith and practice of Judaism— then, in some ways, his biography writes itself. The Jesus that is uncovered in the process may not be the Jesus we expect; he certainly will not be the Jesus that most modern Christians would recognize. But

in the end, he is the only Jesus that we can access by historical means. Everything else is a matter of faith.”(p.xxxi).

“No wonder, then, that at the end of his life, when he stood beaten and bruised before Pontius Pilate to answer the charges made against him, Jesus was asked but a single question. It was the only question that mattered, the only question he would have been

brought before the Roman governor to answer before being sent off to the cross to receive the standard punishment for all rebels and insurrections. “Are you the King of the Jews?””(p.126).

“Crucifixion was a widespread and exceedingly common form of execution in antiquity, one used in Persians, Indians, Assyrians, Scythians, Romans, and Greeks. Even the Jews

practiced crucifixion; the punishment is mentioned numerous times in rabbinic sources. The reason crucifixion was so common is because it was so cheap. It could be carried out almost anywhere; all one needed was a tree. The torture could last for days without the need for an actual torturer. The procedure of the crucifixion –how the victim was hanged— was left completely to the executioner. Some were nailed with their heads downward. Some had their private parts impaled. Some were hooded. Most were stripped naked. It was Rome that conventionalized crucifixion as a form of state punishment, creating a sense of uniformity in the process, particularly when it came to the nailing of the hands and feet to a crossbeam. ... Yet it would be inaccurate to refer to crucifixion as a death penalty, for it was often the case that the victim was first executed, then nailed to a cross. The purpose of crucifixion was not so much to kill the criminal as it was to serve as a deterrent to others who might defy

“The Jesus that is uncovered in the process may not be the Jesus we expect; he certainly will not be the Jesus that most modern Christians would recognize.”

the state. For that reason, crucifixions were always carried out in public—at crossroads, in theaters, on hills, or on high ground—anywhere where the population had no choice but to bear witness to the gruesome scene. The criminal was always left hanging long after he had died; the crucified were almost never buried. Because the entire point of crucifixion was humiliate the victim and frighten the witnesses, the corpse would be left where it hung to be eaten by dogs and picked clean by the birds of prey. The bones would then be thrown onto heap of trash, which is how Golgotha, the place of Jesus's crucifixion, earned its name: the place of skulls.

Simply put, crucifixion was more than a capital punishment for Rome; it was a public reminder of what happens when one challenges the empire. That is why it was reserved solely for the most extreme political crimes: treason, rebellion, sedition, banditry. If one knew nothing else about Jesus of Nazareth save that he was crucified by Rome, one would know practically all

that was needed to uncover who he was, what he was, and why he ended up nailed to a cross. His offense, in the eyes of Rome, is self-evident. It was etched upon a plaque and placed above his head for all to see: Jesus of Nazareth, King of the Jews. His crime was daring to assume kingly ambitions.”(p.155-156).

Third point: “By most accounts, the church they left behind was demolished in 70 C.E. and all signs of the first Christian community in Jerusalem were buried in a mound of rubble and ash. With the Temple in ruins and the Jewish religion made pariah, the Jews who followed Jesus as messiah had an easy decision to make: they could either maintain their cultic connections to their parent religion and thus share in Rome's enmity (Rome's enmity toward Christians would peak much later), or they could divorce themselves from

“For in the year 66 C.E.,the emperor Nero..... seized Peter and Paul and executed them both for espousing what he assumed was the same faith. He was wrong.”

Judaism and transform their messiah from a fierce Jewish nationalist into a pacifistic preacher of good works whose kingdom was not of this world. It was not only fear of Roman reprisal that drove these early Christians. With Jerusalem despoiled, Christianity was no longer a tiny Jewish land surrounded by hundreds of Jews. After 70 C.E., the center of the Christian movement shifted from Jewish Jerusalem to the Graeco-Roman cities of the Mediterranean: Alexandria, Corinth, Ephesus, Damascus, Antioch, Rome. A generation after Jesus's crucifixion, his non-Jewish

followers outnumbered and overshadowed the Jewish ones. By the end of the first century, when the bulk of the gospels were being written, Rome—in particular the Roman intellectual elite—had become the primary target of Christian evangelism. Reaching out to this particular audience required a bit of creativity on the part of the evangelists. Not only did all traces of revolutionary zeal have to be removed from the life

of Jesus, the Romans had to be completely absolved of any responsibility for Jesus's death. It was the Jews who killed the messiah.”(p.150).

“For in the year 66 C.E., the same year that Jerusalem erupted in revolt, the emperor Nero, reacting to a sudden surge of Christian persecution in Rome, seized Peter and Paul and executed them both for espousing what he assumed was the same faith. He was wrong.”(p.196).

“They called James, the brother of Jesus, “James the Just.” In Jerusalem, the city he had made his home after his brother's death, James was recognized by all for his unsurpassed piety and his tireless defense of the poor. He himself owned nothing, not even the clothes he wore—simple garments made of linen,

not wool. He drank no wine and ate no meat. He took no baths. No razor ever touched his head, nor did he smear himself with scented oils. It was said he spent so much time bent in worship, beseeching God's forgiveness for the people, that his knees grew hard as a camel's."(p.197).

"One cannot know how Paul felt in Rome when he heard about James's death. But if he assumed the passing of Jesus's brother would relax the grip of Jerusalem over the community, he was mistaken. The leadership of the Jerusalem assembly passed swiftly to another of Jesus's family members, his cousin Simeon son of Clopas, and the community continued unabated until four years after James's death, when the Jews suddenly rose up in revolt against Rome. Some among the Hebrews seem to have fled Jerusalem for Pella when the uprising began. But there is no evidence to suggest that the core leadership of the mother assembly abandoned Jerusalem. Rather, they maintained their presence in the city of Jesus's death and resurrection, eagerly awaiting his return, right up to the moment that Titus's army arrived and wiped the holy city and its habitants—both Christians and Jews—off the face of the earth. With the destruction of Jerusalem, the connection between the assemblies scattered across the Diaspora and the mother assembly rooted in the city of God was permanently severed, and with it the last physical link between the Christian community and Jesus the Jew. Jesus the zealot. Jesus of Nazareth."(p.212).

"Two thousand years later, the Christ of Paul's creation has utterly subsumed the Jesus of history. The memory of the revolutionary zealot who walked across Galilee gathering an army of disciples with the goal of establishing the Kingdom of God on earth, the magnetic preacher who defied the authority of the Temple priesthood in Jerusalem, the radical Jewish nationalist who challenged the Roman occupation and lost, has been almost completely lost to history. That is a shame. Because the one thing any comprehensive study of the historical Jesus should hopefully reveal is that Jesus of Nazareth—Jesus the man—is every bit

as compelling, charismatic, and praiseworthy as Jesus the Christ. He is, in short, someone worth believe in."(p.216).

And a lot more were all delicately tailored into the storytelling of this book such as: Promised Land (a.k.a. a hole in the corner for Romans), the wars with Rome, Roman occupation, Roman retribution, Roman governors, King of the Jews, Kingdom of God, Roman appointed high priests at the Temple of Jerusalem, Holy of Holies, Court of Gentiles, Roman onslaught, money changers, the sacred feast days, animal sacrifices and the blood libation, Messiah, a tiny village Nazareth, Galilee, Jesus's brother James, infancy narratives, gospels, Q material, Mark, Luke, Matthew, John, Fourth Philosophy, zeal, King David, Julius Caesar, Pontius Pilate, John the Baptist, Herod Antipas, Sicarii, rebels, Samaritan, Jordan River, Josephus's Antiquities, Syria, Holy Spirit, King Solomon, King David, disciples, the Twelve, brothers James and John, exorcist, healer, preacher, miracle worker, magic-working, miracles, sedition, Greek, Israel, Son of God, Son of Man, crucifixion, Law of Moses, Stephen, former Pharisee Paul, Hellenists, gentiles, Jew from Tarsus named Saul, Damascus, Anatolia, Barnabas, Apostolic Council, Peter, James the Just, Pseudo-Clementines, Homilies, Recognitions, Ascent of James, Byzantine city of Nicaea on the eastern shore of Lake Izmit in present-day Turkey, emperor Constantine, Nicene Creed, Council of Nicaea, city of Hippo Regius in modern-day Algeria...

There you have it; one of my pleasures from the past summer. In conclusion, it is apparent that both, the evolution of the supply chain of religion(s) and the current state of the supply chain of religion(s) are important considerations that cannot be ignored in the way our societies are operating and designing the future.

CALL FOR PAPERS

EUROPEAN DECISION SCIENCES INSTITUTE

11th Annual Meeting

A New World of Decision Sciences

May 24-27, 2020

Lund, Sweden

CONFERENCE THEME

New concepts, perspectives, and tools such as sustainability and digitalization are successively penetrating and populating the area of Decision Sciences, and renewing the world of Decision Sciences. At the same time, Decision Sciences can contribute to a new, and hopefully better world.

VENUE

EDSI 2020 will be hosted by Lund University, in Lund, Sweden. The Lund Cathedral was established in 1123, and the Lund University was established in 1666. The conference will take place in some of the older university buildings in downtown Lund.

PROGRAM TRACKS

Behavioral Operations
Data Analytics
Decision Making in the Era of Industry 4.0
Decision Making in Public Organizations
Decision Support Systems
Digitalization in Operations and Supply Chains
Digital Business Transformations
Global Operations, Plant Location and Rightshoring
Healthcare Operations
Humanitarian Operations
Information Systems in Operations and



Supply Chains
Innovation
Innovative Teaching Methods
Interfaces between Functional Areas
Logistics and Transportation
Operations Planning and Control
Operations Strategy
Performance Measurement and Management
Purchasing, Procurement and Rightsourcing
Retail Operations
Risk Management
Service Operations
Strategy
Supply Chain Management
Supply Networks
Sustainability
Technology Management

IMPORTANT DATES

Abstract submission: January 15, 2020
Notification of acceptance: February 15, 2020
Full paper submission (optional): April 1, 2020
Early bird registration: April 1, 2020

Sunday May 24

- Registration, from 4pm
- Welcome Reception, from 6pm
- Concert, 7.30 pm

CONT. FROM PG. 23

Monday May 25

- Keynote
- Parallel sessions
- City tour
- Gala dinner

Tuesday May 26

- Keynote
- Parallel sessions
- Dinner at nearby castle, bus transfer

Wednesday May 27

- Tours and visits (optional, numbers limited):
- IKEA, Älmhult, bus transfer
- Additional tours to be announced

ABSTRACT AND PAPER SUBMISSIONS

Presentation at the conference will be based on acceptance of an abstract, which should include the title, author(s) and

affiliation(s), and briefly describe (up to 300 words) the aims, methods / approach, results / findings, and implications. Following abstract acceptance, delegates will have the option to submit a full paper, addressing the review comments. The conference proceedings will include both full papers and accepted abstracts. There has to be one unique conference participant per paper or abstract, i.e. one person can present at most one paper or abstract.

CONFERENCE CHAIR

Professor Jan Olhager, Lund University

LOCAL ORGANIZING COMMITTEE

Professor Andreas Norrman, Lund University

Dr Louise Bildsten, Lund University

Dr Joakim Kembro, Lund University

Magnus Berg, Lund University

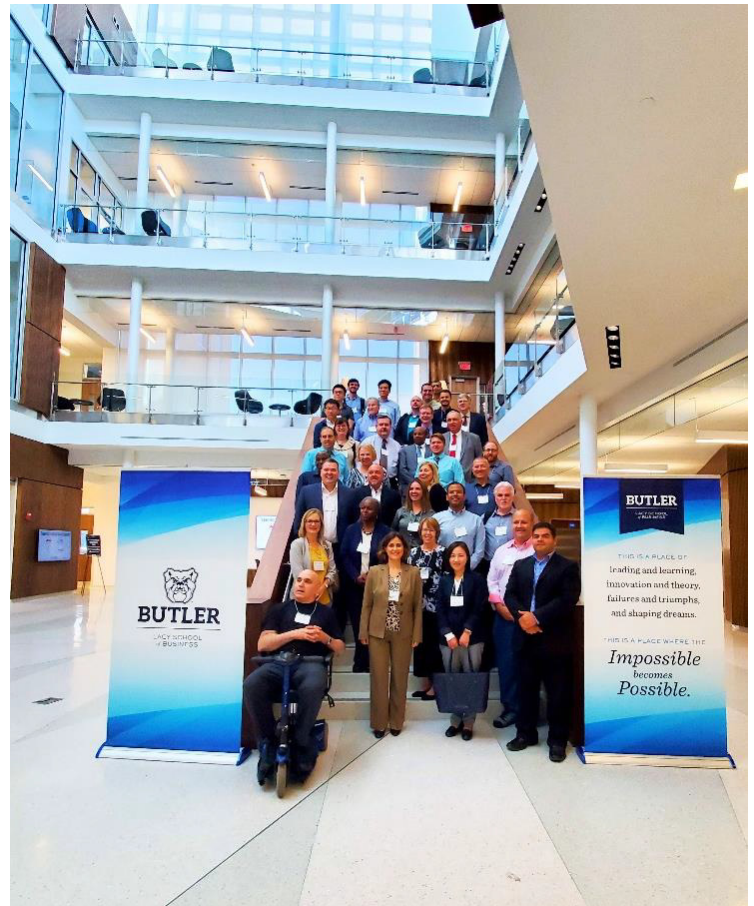
Malin Johansson, Lund University

MWDSI 2019 ANNUAL MEETING RECAP

The Midwest region of the Decision Sciences Institute held its 50th Annual Meeting on September 14, 2019 in Indianapolis, Indiana. Diane Parente and Peggy Daniels Lee served as co-chairs of this one-day event, which included 46 presentations organized into four parallel tracks. Top themes in the program included data analytics, information systems and technology, behavioral supply chain research and teaching innovation.

Forty four attendees traveled from eight states and the countries of Saudi Arabia and Brazil, gathering on the scenic campus of Butler University. MWDSI president Sanjay Kumar opened the conference with remarks, followed by greetings from DSI president Jan Hartley and the Dean of Butler's Lacy School of Business, Stephen Standifird. Lunchtime featured a panel discussion on the "Frontiers of Case-based Teaching," as Natalie Simpson, Peggy Daniels Lee and Mark Frohlich described three different non-traditional implementations of the case method. Awards included Best Paper, recognizing "Self - Organizing Maps: a Better Way to Identify and Map Business Clusters" by Francis Bowen and Jane Seigler.

The one-day conference concluded with a well-attended networking session, focused on creativity in future MWDSI activities. Guided discussion revealed consensus on the merits of the one-day conference format and mutual interest in monthly webinar programming, which is expected to start before the end of 2019. Near the conclusion, DSI President Jan Hartley announced that Bowling Green State University had volunteered as host for MWDSI's next annual meeting in April 2021. Mark your calendar!



Participants in the 2019 MWDSI Annual Meeting gather in the lobby of Butler University's newest building, home to the Lacy School of Business. Operational for two months prior to the conference, this beautiful facility had already hosted several meetings, but MWDSI attendees had the honor of being the first non-Butler faculty to present scholarship here.

CALL FOR PAPERS

NORTHEAST DECISION SCIENCES INSTITUTE

**49TH Annual Meeting,
March 26-28, 2020
Hyatt Regency,
Cambridge, Massachusetts**

Submission Deadline: December 15, 2019
**NEDSI is the Northeast Regional Subdivision of the
Decision Sciences Institute**

MEETING ANNOUNCEMENT

The 2020 Northeast Decision Sciences Annual Meeting will be held between March 26-28, 2020 in Cambridge, MA. The conference will start on Thursday and continue through Saturday night. All paid attendees are invited to the Welcome session, paper presentations, the President's Reception, Award Ceremony, and other events.

CALL FOR PAPERS

Full papers, abstracts, and workshops are invited. Undergraduate students may submit proposals for Poster Sessions. Sessions involving practitioners will be given consideration. Submissions will be refereed and accepted papers will be published in the online Conference Proceedings. By submitting a manuscript, the author certifies that it is not copyrighted or previously published, has not been presented or accepted for presentation at another professional meeting, and is not currently under review for presentation at another professional meeting. At least one of the authors must certify that he/she intends to register for and attend the conference to present the paper if it is accepted.

All papers, abstracts, and undergraduate posters, must be submitted electronically on or before December 15, 2019. If you have proposals for workshops or round-table discussions, please email the co-chairs.



OUTSTANDING PAPER AWARDS

Outstanding papers are eligible for awards:

- Best Application of Theory
- Best Contribution to Theory
- Best Paper on Innovation or Sustainability
- David M. Levine Award for Innovative Education
- Richard Briotta Award for Knowledge Management/Strategy
- Best Student Papers

PROGRAM TRACKS

- Accounting, Finance, Economics
- Big Data, Business Analytics and Knowledge Management
- Decision Making
- Information Systems and Decision Support
- Innovation and Creativity
- Legal, Ethical, and Social Issues
- Marketing and Consumer Behavior
- Operations Management/Operations Research
- Service and Healthcare Management
- Strategy and Organizational Behavior

CONT. FROM PG. 26

- Supply Chain Management and Logistics
- Sustainability
- Teaching and Innovative Education
- Undergraduate Posters

HOTEL ARRANGEMENTS

The host hotel is the Hyatt Regency, overlooking Boston and the Charles river. For reservations with the conference rate please go to

<https://www.hyatt.com/en-US/group-booking/BOSRC/G-NEDS>

CONFERENCE WEBSITE/SUBMISSION LINK

- Go to <https://nedsi.net/2020-conference> for more info on the conference.
- To submit your paper go to <https://nedsi2020.exordo.com/>

HOST SPONSOR



CONTACT INFORMATION

Dr. Gang Li (GLi@bentley.edu)

Dr. Euthemia Stavroulaki (ESTavroulaki@bentley.edu)

2020 NEDSI Program Co-Chairs

Management Department, Bentley University,
Waltham, MA



SOUTHEAST DECISION SCIENCES INSTITUTE



Fiftieth Annual Meeting — February 12 - 14, 2020

Charleston, South Carolina

Francis Marion Hotel Charleston – Historic District

387 King Street, Charleston, SC 29403

Call 1-(877) 756-2121 or visit <https://www.francismarionhotel.com/directions-and-map/>

DEADLINE FOR PAPERS AND SPECIAL SESSION PROPOSALS: NOVEMBER 1, 2019

DEADLINE FOR STUDENT PAPERS: NOVEMBER 1, 2019

Keynote — Rama Akkiraju, IBM Distinguished Engineer, IBM Watson AI Operations, IBM Master Inventor, Member, IBM Academy of Technology, Janet Crouch at infodev@us.ibm.com. **President's Award Luncheon Distinguished Speaker** Dr. Andrew T. Hsu, President of College of Charleston. Many former SEDSI Presidents and their current school deans.

Special Sessions and Workshops on Blockchain Technology in SCM, GIS in SCM, Emergency! The ED Simulation Game, Award Winning Educator on Hospitality Instructions, First Gen[ethics]: Fostering Mutual Understanding for Greater Success of First Generation / Lower Income Students.

Data Analytics and Statistics Instruction (DASI) (Invited sessions only) — Robert Andrews, Virginia Commonwealth University, randrews@vcu.edu and Kelli Keeling, University of Denver, kkeeling@du.edu

Assessment and Learning Improvement (Invited session only) — Linda Campion, East Carolina University, campion16@ecu.edu. Diane Lending, James Madison University and Hope Baker, Kennesaw State University

Meet College/School Deans (Invited session only) — Michael Busing, James Madison University, busingme@jmu.edu

- | | | |
|-------------------------|--|--|
| ○ Robert T. Sumichrast, | Dean of Pamplin College of Business, | Virginia Tech |
| ○ Peter Brews, | Dean of Darla Moore School of Business, | University of South Carolina |
| ○ Chris Martin, | Dean of College of Business, | Louisiana Tech University |
| ○ Nancy D. Albers, | Dean of College of Business, | Louisiana State University in Shreveport |
| ○ Mike Busing, | Dean of College of Business, | James Madison University |
| ○ Robert T. Burrus, Jr. | Dean of Cameron School of Business, | University of North Carolina Wilmington |
| ○ Jacob Chacko, | Dean of College of Business, | Clayton State University |
| ○ Alex Koochang, | Dean of School of Information Technology, | Middle Georgia State University |
| ○ Kai Koong, | Dean of Brimmer College of Business and Information Science, | Tuskegee University |
| ○ Alan T. Shao, | Dean of School of Business, | College of Charleston |
| ○ Michael R. Weeks, | Dean of Tommy and Victoria Baker School of Business, | The Citadel |

Meet Journal Editors (Invited sessions only) — Binshan Lin, Louisiana State University at Shreveport, binshan.lin@lsus.edu

- | | |
|---|--|
| ○ Decision Science Journal Innovative Education, | Editor, Matthew Drake, Duquesne University |
| ○ Electronic Government, an International Journal, | Editor-in-Chief, June Wei, University of West Florida |
| ○ Expert Systems with Applications, | Editor-in-Chief, Binshan Lin, Louisiana State University in Shreveport |
| ○ International Journal of Electronic Finance, | Editor-in-Chief, Jiaqin Yang, Georgia College and State University |
| ○ International Journal of Electronic Healthcare, | Editor-in-Chief, Kai S. Koong, Tuskegee University |
| ○ International Journal of Innovation and Learning, | Editor-in-Chief, Kongkiti Phusavat, Kasetsart University, Thailand |
| ○ International Journal of Mobile Communications, | Editor-in-Chief, June Wei, University of West Florida |
| ○ Journal of Computer Information Systems, | Editor-in-Chief, Alex Koochang, Middle Georgia State University |
| ○ Journal of Supply Chain Management, | Co-Editor-in-Chief, Barbara B. Flynn, Indiana University |
| ○ The Sport Management Education Journal, | Associate Editor, David Shonk, James Madison University |

PAPERLESS SUBMISSION PROCESS

INSTRUCTIONS FOR CONTRIBUTORS:

General Instructions: To submit a paper, abstract, or symposium/tutorial/workshop proposal, go to the SE DSI web site at www.sedsi.org and select the submission link. The submission process opens July 1, 2019 and closes Nov. 2, 2019.

- Information to be entered during the paper entry process includes (1) the track to which it is submitted, (2) the title of the paper; (3) the author(s) name(s), affiliation(s), and complete contact information including mailing address(es), telephone number(s) and e-mail address(es).
- The submission to be uploaded must be in PDF format. The submission should include the title and, optionally, a one-paragraph abstract between the title and the body of the paper. The names of the author(s) should NOT be included.
- Submitted papers should be a minimum of four pages.

Program Tracks**Accounting, Economics, Cryptocurrency and Finance**

— Michelle Hagadorn, Roanoke College,
hagadorn@roanoke.edu

Analytics, Big Data Applications, Business Intelligence, Data Mining, Statistics and Expert Systems

— Binshan Lin, Louisiana State University at Shreveport,
binshan.lin@lsus.edu

Healthcare, Public Sector and Not for Profit Management

— Elham Torabi and Helen You, James Madison University,
torabiex@jmu.edu, youxx@jmu.edu

Hospitality, Recreation and Sports

— David Shonk, James Madison University,
shonkdj@jmu.edu

Information Privacy, Security and System Resilience

Business Ethics and Business Law — Elena Olson, Virginia Commonwealth University,
eolson2@vcu.edu

Innovative Education, Assessment, Engaged Learning

Curriculum, Teaching and Pedagogy — Ajay Aggarwal,
Henderson State University, aggarwa@hsu.edu

IS, IT, Blockchain Technology, and Social Media

— June Wei, University of West Florida, jwei@uwf.edu

Management, Strategy, Organizational Behavior

Organizational Theory, and Human Resource Management — Sara Kiser, Alabama State University,
kiser@alasu.edu

Marketing, Consumer Behavior, International Business

— Rebecca Scott, University of North Carolina Wilmington,
scotra@uncw.edu

Student Papers (Undergraduate, Master and Ph.D Students)

— Elizabeth Rasnick, Georgia Southern University,
erasnick@georgiasouthern.edu

Sustainability, SCM, Quality Management, and Logistics

— Hadi Farhangi, Savannah State University,
farhangih@savannahstate.edu, and Suman Niranjani, University of North Texas,
suman.niranjani@unt.edu

STUDENT PAPERS— The 2020 SE DSI Student Paper Competition welcomes papers written by Undergraduate, MBA, and/or Ph.D. students. Papers submitted to any of the three Student Tracks must be solely of student authorship and will be subject to the same review process as regular papers. Student papers must be submitted on-line by November 29, 2019 using the paperless submission process. All student papers accepted by the reviewers will be scheduled on the program. The judges of the Student Paper Competition will evaluate the combined quality of each student paper/presentation and recognize the outstanding ones at the meeting's luncheon on February 14th. **The Submission Deadline for Student Papers is November 1, 2019.**

Southeast Decision Sciences Institute

Dr. Ping Wang – 2020 Program Chair

**Southeast Decision Sciences Institute
Fiftieth Annual Meeting**

**February 12-14, 2020
Francis Marion Hotel
Historic Charleston, South Carolina**

COMPETITIVE PAPERS—The submission of a competitive paper or abstract for review means the author certifies that the paper is original and has not been previously copyrighted, published, presented, or submitted for publication or presentation. For an accepted paper to be published in the proceedings, at least one author must register for the meeting and present the paper during the meeting. Outstanding papers will be selected and recognized at the meeting luncheon on February 14th. **The Final Submission Deadline for Regular Papers and Abstracts is November 1, 2019.**

SYMPOSIA, TUTORIALS, AND WORKSHOPS—Proposals for symposia, tutorials, and workshops must be at least two (2) pages long describing what you intend to do and why it would be of interest and importance to members of the Institute. Submissions should follow the general guidelines presented below although considerable latitude will be allowed as to the content and format of these sessions. You must provide your own specialized computers or other equipment needed for the session (SEDSI will provide LCD projectors). All participants in symposia, tutorials, and workshops must register and attend the meeting.

PROCEEDINGS—The SE DSI will publish electronic *Proceedings* online containing all papers presented at the meeting as well as summaries of all symposia, tutorials, and workshops. Authors are responsible to adhere to the standards outlined online for publication in the Proceedings. Notification of acceptance or rejection should occur in December of 2019, and accepted papers will be due in final *Proceedings* form no later than Jan 3, 2020.

VOLUNTEERS—Individuals interested in participating in the 2020 Program by serving as a reviewer, discussant, session chair, or in some other role should contact the Program Chair at the address indicated below. A Volunteer form is available on the SE DSI web site: www.sedsi.org.

PLACEMENT SERVICE—A Placement Service will be provided at the meeting at no cost to the applicants or employers. Placement Services Forms for Applicants and Positions are available on the SE DSI website. The forms may be submitted to Dr. Ping Wang, wangpx@jmu.edu.

Program Chair — Ping Wang, Computer Information Systems / Business Analytics, James Madison University, wangpx@jmu.edu

Associate Program Chair — Luis Novoa, Computer Information Systems / Business Analytics, James Madison University, novoadlj@jmu.edu

Local Arrangements Coordinator — Drew Rosen, Dept. of Information Systems & Operations Management University of North Carolina Wilmington, rosenl@uncw.edu

Placement/Technology Coordinator — Luis Novoa, James Madison University, novoadlj@jmu.edu

Proceedings Editor — Leigh A. Mutchler, James Madison University, mutchlla@jmu.edu

All questions should be addressed to:

Dr. Ping Wang
2020 SEDSI Program Chair
Department of Computer Information Systems / Business Analytics
MSC 0202, James Madison University
Harrisonburg, VA 22807
wangpx@jmu.edu, 540-568-3055

For more information and various meeting related forms, please visit the SE DSI website: www.sedsi.org

Non-Profit
Organization
U.S. Postage
Paid
Pensacola, FL
2514
Permit No. ___



The **REAL** 50th ANNUAL MEETING, San Antonio, Texas March 11-14, 2020



Call for Papers

Southwest Decision Sciences Institute, March 11-14, 2020

Hyatt Regency, San Antonio, TX

Deadline for Paper Submissions: October 14, 2019



Program Chair, Daniel Peak, University of North Texas, daniel.peak@unt.edu.

For more information, refer to the conference website: www.swdsi.org/SWDSI2020

Or the submission website: <https://www.easychair.org/conferences/?conf=swdsi2020>

→ We recently discovered that 2020 is **really** the 50th Annual SWDSI Conference! ←

Competitive Papers. Competitive papers are invited on, but not limited to, the topic areas listed below. All submitted papers will be reviewed by qualified individuals and go through a double blind peer review process. In addition, we welcome the submission of one-page single spaced research abstracts (about 150-300 words). Acceptance of abstracts and papers are subject to final approval by the Track Chairs/Program Chair. Accepted papers and abstracts of authors who have registered for the conference by the close of online registration will be scheduled for presentation at the annual meeting and the presented papers and abstracts will be published in the Proceedings (available website only). Paper submission acknowledges that the author(s) will register for and attend the conference, and personally present the accepted paper at the time specified in the conference program.

Submission Policy. The submission of a paper or abstract means the author certifies it is not copyrighted, has not been accepted for publication in a journal or proceedings, has not been presented or accepted for presentation at a professional meeting, or is not under review currently for a journal or proceedings, or presentation at another professional meeting. Concurrent submission and/or presentation of the same or similar paper at another conference is considered a breach of professional ethics.

Program Participation. Paper reviewer and session chairpersons will be needed for the program to be a success. Please contact the Program Chair or one of the Track Chairs by **October 1, 2019**, if you are interested in serving as a session chair or reviewer. Symposia, tutorials, and workshops on current topics are invited. Please contact the Program Chair concerning these proposals.

Distinguished Paper Awards. Distinguished paper awards will be presented to the outstanding papers.

Student Papers. Up to three cash awards for student papers will be presented. Papers submitted in the student track must be solely of student authorship. Watch the SWDSI website for information about a Doctoral Student Consortium.

Fast Track Journal Reviews. The papers nominated for the best paper awards will be recommended to a group of journal editors for another round of fast track peer review and possible publication in these journals:

International Journal of Mobile Communications
International Journal of Electronic Finance
International Journal of Services and Standards
Electronic Government: An International Journal
Studies in Business and Economics

www.inderscience.com/ijmc
www.inderscience.com/ijef
www.inderscience.com/ijss
www.inderscience.com/eg
www.qu.edu.qa/business/journal/

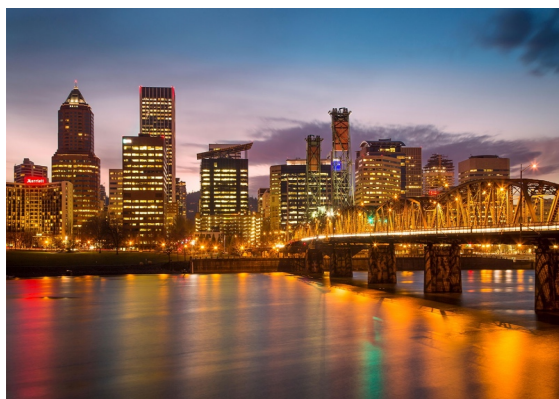
SPECIAL SESSIONS. TBD

- **Workshop:** Python and the Jupyter Notebook environment for data analysis, University of Central Arkansas, mellis@uca.edu

TRACKS & CHAIRS

- **Accounting and Ethics**, Mary Fischer, University of Texas at Tyler, mfischer@uttyler.edu
- **Decision Support and Expert Systems**, Binshan Lin, Louisiana State University at Shreveport, binshan.lin@lsus.edu
- **E-Commerce and Social Networking** Gina Harden, Stephen F. Austin State University, hardengm@sfasu.edu
- **Economics, Law and Finance**, M. Kabir Hassan, The University of New Orleans, mhassan@uno.edu
- **Enterprise Systems (ERP), Information Security and Privacy**, Mohammad I. Merhi, Indiana University South Bend, mmerhi@iusb.edu
- **Innovative Education**, Pamela Rogers, Stephen F. Austin State University, rogerspp@sfasu.edu
- **Internet of Things and Big Data**, John Seydel, Arkansas State University, jseydel@astate.edu
- **Management Information Systems**, Mike Ellis, University of Central Arkansas, mellis@uca.edu
- **Management, Healthcare and Org Behavior** Venugopal Gopalakrishna-Remani, University of Texas at Tyler, venugopal@uttyler.edu
- **Marketing and International Business**, Thiagarajan Ramakrishnan (Ram), Prairie View A&M University, Ram@pvamu.edu
- **Operations and Project Management**, Balaji Janamanchi, Texas A&M IU, bjanamanchi@tamiu.edu
- **Quantitative Methods, Quality and Business Analytics**, Robert Pavur, U of North Texas, Robert.pavur@unt.edu
- **Supply Chain, Logistics and UAVs**, Mary Helen Fagan, University of Texas at Tyler, mfagan@uttyler.edu
- **Student Track**, Gayle Prybutok, University of North Texas, gayle.prybutok@unt.edu
- **Special Panels**, S. Mantravadi, University of West Florida, smantra2013@gmail.com
- **Proceedings Editor**, Will Senn, Emporia State University, wsenn@emporia.edu

INSTRUCTIONS FOR CONTRIBUTORS	SOME SUGGESTED TOPICS	
<ol style="list-style-type: none"> 1. Author(s) must submit papers/abstracts via https://www.easychair.org/conferences/?conf=swdsi2020. Abstracts should not exceed three pages; papers should not exceed 20 pages. The more complete and detailed the submission, the greater its chance for acceptance. Hard copies will not be accepted. The site will open August 1, 2019. 2. Each submission must include a separate title page with the following information: <ol style="list-style-type: none"> (1) Title of submission (2) Type of submission (i.e., research paper, abstract, proposal-workshop, tutorial, panel, symposium). (3) Author(s) (4) Affiliation(s) (5) Complete address(es) (6) Telephone number(s) (7) Email address of the author(s) (8) Name of the dean(s) of the affiliate school(s) (9) Track (or topic) that best fits the submission (10) Corresponding author 3. Initial papers should follow formatting provided at http://www.swdsi.org/swdsi2020/2020_SWDSI_Proceedings_Formatting_Instructions.pdf. Up to 20 pages will be accepted for the initial paper. 4. The main body of the paper, abstract, or proposal must have a title but should not include author name(s). 5. All submissions must be received by October 14, 2019. Acceptance or rejection notifications will be provided by December 1, 2019. Camera-ready submission deadline for the <i>Proceedings</i> is January 7, 2020. 6. A registration fee will be required before papers are accepted by the <i>Proceedings</i> Editor at wsenn@emporia.edu 7. Volunteers: Anyone interested in participating in the program as a session chair or reviewer should communicate their interests to the Program Chair at daniel.peak@unt.edu. 	<ul style="list-style-type: none"> • 3-D Printing • Accreditation Issues in DS • Analytics • Artificial Intelligence • Autonomous Vehicles • Big Data • Bodycams and • Changing Career Paths • Classrooms Technology • Cloud-based Systems • Corporate Social Responsibility • Data Visualization • Data Warehousing • Data and Text Mining • Drones/UAVs • Emerging Programming Languages • Employment Trends • Ethical & Legal Issues • Forecasting • Geospatial Analytics • Global and Regional Economic Cooperation • Global Strategies • Global Sourcing • Healthcare Informatics • Impact of Higher Education • Inclusiveness • Inequality • Innovation • Instructional Issues in DS • Information Security • Internet of Everything (IoE) • Knowledge Management • Mgmt. of Technology • Market-based Curricula 	
	<ul style="list-style-type: none"> • MOOCS and their Variations • Methodologies • Multimedia • Online/Distance Learning • Optimization • Organizational Culture • Outsourcing & Offshoring • Performance Measurement • Process Reengineering • Professional Student Organizations • Project Management • Rapid Prototyping • Reengineering Higher Education • Risk and Uncertainty • RFID Applications • Scorecards and Dashboards • Simulation • Social Media • Student Engagement • Sys Analysis and Design • Systems Implementation • Technology for the Aging • Total Quality Management • Vision Systems 	



CALL FOR PAPERS

Papers are invited in, but not limited to, the topical areas listed. Full papers are double-blind reviewed first by referees and abstracts are reviewed by Track Chairs. Accepted papers and abstracts will be published in the conference proceedings at the option of the author(s). Copyright of the papers will stay with the author(s). Paper submission acknowledges that the author will register for the conference and present, in person, the paper at the time specified in the conference program. Panels, workshops, and tutorials on current topics of interest, and other special sessions are also planned. Please contact the Program Chair, if you are interested in any of these.

PROGRAM CHAIR

[Salem Boumediene](mailto:Salem.Boumediene@msubillings.edu), Montana State University Billings

BEST PAPER AWARDS

Accepted regular papers will be considered for the Decision Sciences and Information Systems Honor Society, *Alpha Iota Delta*, *Best Paper Awards* in the following categories:

- Applications
- Case Studies
- Environmental Issues
- Interdisciplinary Issues
- Theoretical Research
- Empirical Research

In addition, awards will be given for the *best undergraduate student paper* and the *best graduate student paper*.

JUNIOR FACULTY AWARDS

The governing board of the Western Decision Sciences Institute (WDSI) has approved funding for a number of \$500 awards to support tenure-track faculty to attend the 2020 WDSI annual meeting. For details, please refer to the conference website, <https://wdsi2020.org>

IMPORTANT DATES

Submissions Begin: **June 1st, 2019** - <https://wdsi2020.exordo.com>
 Submission Deadline: **October 25th, 2019**
 Notification of Acceptance: **November 15, 2019**
 Camera-Ready Manuscript Submission Deadline: **January 15, 2020**

Call for Papers

WESTERN DECISION SCIENCES INSTITUTE

Forty-Ninth Annual Meeting,
 April 7th – April 10th, 2020

Portland Marriott Downtown Waterfront
 1401 SW Naito Parkway,
 Portland, Oregon, 97201 USA

Submission Deadline: October 25, 2019

WDSI is the Western Regional Subdivision of the
 Decision Sciences Institute

TOPICAL AREAS AND TRACKS

Accounting: Salem Boumediene, Montana State University Billings, salem.boumediene@msubillings.edu
Business Analytics and Data-Driven Decision Making: Abbas Heiat, Montana State University Billings, ahaiat@msubillings.edu
Business Environment - Strategy, Policy, Law, Ethics: Xia Zhao, California State University Dominguez Hills, xzhao@csudh.edu
Finance and Investment: Pia Gupta, California State University Long Beach, pia.gupta@csulb.edu and KC Chen, California State University Fresno, kchen@mail.fresnostate.edu
Hospitality Management and Marketing: Natasa Christodoulidou and Keong Leong, California State University Dominguez Hills, nchristodoulidou@csudh.edu and keong.leong@unlv.edu
Innovative Education: Rita Kumar, California State Polytechnic University, Pomona, adkumar@cpp.edu
Internet and e-Business: Albert Huang, University of the Pacific, ahuang@pacific.edu and David Yen, Sunny Oneonta, david.yen@oneonta.edu
Management Information System: Marcus Rothenberger, University of Nevada Las Vegas, marcus.rothenberger@unlv.edu
Management Science and Quantitative Methods: Seong-Jong Joo, Air Force Institute of Technology, sludoc95@gmail.com
Management, Entrepreneurship and Organization: Cindy Sutton, Metropolitan State University of Denver, suttoncy@msudenver.edu
Marketing: Sally Baalbaki-Yassine, Metropolitan State University of Denver, baalbaki@msudenver.edu
Military Applications: Eddine Dahel, Naval Postgraduate School, edahel@nps.edu and Jeremy Jordan, Air Force Institute of Technology, jeremy.jordan@afit.edu
Modeling and Simulation: Khosrow Moshirvaziri, California State University Long Beach, Khosrow.Moshirvaziri@csulb.edu and Mahyar Amouzegar, University of New Orleans, mahyar@jamds.org
Operations, Logistics and Supply Chain Management: Stanley Griffis, Michigan State University, griffis1@msu.edu and John Bell, University of Tennessee, bell@utk.edu
Public Policy and Public Administration: Rui Sun and Theodore Byrne, California State University Dominguez Hills, rsun@csudh.edu and tbyrne@csudh.edu
Sustainability Issues in Decision Making: Yuanjie He, California State Polytechnic University, Pomona, he@cpp.edu

REGIONAL CONTACTS

China, Hong Kong, Taiwan: Shin-Yuan Hung, National Chung Cheng University, syhung@mis.ccu.edu.tw and Yue "Jeff" Zhang, California State University-Northridge, jeff.zhang@csun.edu

OFFICERS OF OUR AMERICAS REGIONAL SUBDIVISIONS

MWDSI**President:** Sanjay Kumar, Valparaiso University**Past President:** Peggy Daniels Lee, Indiana University Purdue University – Indianapolis**Transition Team:**

Jaideep Motwani, Grand Valley State University

Diane H. Parente, Penn State University - Erie

John Parente, Mercyhurst University

Stephanie Eckerd, Indiana University Purdue University – Indianapolis

Sanjeev Jha, Valparaiso University

Janaina Siegler, Butler University

Archivist: Xiaodong Deng, Oakland University**V.P. of Technology:** Sourish Sarkar, Penn State University – Erie**NEDSI****President:** Doug Hales, University of Rhode Island**President-Elect:** Eric Stein, Pennsylvania State University, Malvern**Immediate Past President:** Neset Hikmet, University of South Carolina**Program Chair 2020:** Effie Stavoulaki and Gang Li, Bentley University**Program Chair-Elect 2021:** Dinseh Pai, Pennsylvania State University, Harrisburg**VP Communications:** Hal Ravinder, Montclair State University**VP Member Services:** Carolyn Lamacchia, Bloomsburg University of Pennsylvania**SEDSI****President:** Tobin Turner, Presbyterian College**President-Elect:** Cheryl Aasheim, Georgia Southern University**Past President:** Reza Kheirandish, Clayton State University**Program Chair:** Ping Wang, James Madison University**Program Chair-Elect:** TBA**Secretary:** Sara Kiser, Alabama State University**V.P. Finance:** Chris McCart, Roanoke College**V.P. Planning & Development:** Mauro Falasca, East Carolina University**V.P. Publications:** Shona Morgan, North Carolina A&T University**SWDSI****President:** Khaled Alshare, Qatar University**President-Elect:** Matthew Lindsey, Stephen F. Austin State University**Program Chair:** Dan Peak, University of North Texas**Program Chair-Elect:** Venugopal Gopalakrishna-Remani, The University of Texas at Tyler**Past President:** Mark McMurtrey, University of Central Arkansas**Secretary:** Balaji Janamanchi, Texas A&M University**VP – Finance:** Lynne Cagle Cox, University of North Texas**VP – Member Services:** Gina Harden, Stephen F. Austin State University**VP – Student Liaison:** Gayle Prybutok, University of North Texas**Regional Archivist:** Peggy Lane, University of Louisiana Monroe**WDSI****President:** Omer Benli, California State University, Long Beach**President-Elect:** Theodore Byrne, California State University, Dominguez Hills**Immediate Past President:** Albert Huang, University of the Pacific**Vice President and Program Chair:** Salem Boumediene, Montana State University – Billings**Vice President and Program Chair-Elect:** Pia Gupta, California State University, Long Beach**Vice President for Advancement and Marketing:** Yuanjie (Ed) He, Cal Poly Pomona**Treasurer/Secretary:** Sheldon Smith, Utah Valley University**Director of Information Systems:** Khosrow Moshirvaziri, California State University, Long Beach

OFFICERS OF OUR INTERNATIONAL REGIONAL SUBDIVISIONS

EDSI

President: Jan Olhager, Lund University

President-Elect: Markku Kuula, Aalto University

Immediate Past President: Marco Sartor, University of Udine

European VP at DSI: Carmela Di Mauro, University of Catania

Secretary/Treasurer: Guido Orzes, Free University of Bozen-Bolzano

ISDSI

President: M.P. Jaiswal, Indian Institute of Management

Immediate Past President: Abhijeet K. Digalwar, BITS Pilani

Vice President: E.B. Khedkar, Pune University

Immediate Past Vice President: Ravi Kumar Jain, Symbiosis Institute of Business Management

Vice President (At Large): Ramachandran (Nat) Natarajan, Tennessee Tech University

OPEN POSITIONS AT HIGHER EDUCATION INSTITUTIONS

The Decision Sciences Institute website provides a listing of open academic positions. Below you will find Placement Listings for July 8– October 9, 2019. For more details on these and other position listings, as well as applicant listings, visit the DSI website – decision-sciences.org Ready to post a position? Guidelines on how to list your position can be found there as well.

POSTING DATE	INSTITUTION	LOCATION	JOB TITLE	JOB TYPE	AREA OF INTEREST
10/9/19	Bentley University	Waltham, MA USA	Assistant/Associate Professor of Information & Process Management	Tenure Track	Computer Information Systems
10/9/19	University of Wisconsin Eau Claire	Eau Claire, WI USA	Assistant Professor	Full-Time, Tenure Track	Information Systems, Data Analytics, Database Management
10/9/19	Georgia State University	Atlanta, GA USA	Clinical Faculty	Non Tenure Track	Operations and Supply Chain Management
10/9/19	Georgia State University	Atlanta, GA USA	Clinical Faculty	Non Tenure Track	Business Analytics
10/9/19	Georgia State University	Atlanta, GA USA	Assistant/Associate Professor	Tenure Track	Operations and Supply Chain Management
10/8/19	University of West Florida	Pensacola, FL USA	Assistant/Associate Professor in Management	Full-Time	Management, Analytics
10/7/19	Georgetown University	Washington, DC USA	Academic Director for the Master of Science in Business Analytics Program	Full-Time 12-month, Non Tenure Track,	Business/Data Analytics
10/4/19	University of Notre Dame	South Bend, IN USA	Assistant Professor of Business Analytics	Full-Time, Tenure Track	Business Analytics, Operations Research/Management, Information Systems
10/3/19	Penn State Erie	Erie, PA USA	Lecturer in Project and Supply Chain Management	Lecturer	Supply Chain Management
10/3/19	University of Notre Dame	Notre Dame, IN USA	Assistant/Associate Teaching Professor	Full-Time, Non Tenure Track	Business Analytics, Accounting, Data Science
10/2/19	Michigan State University	East Lansing, MI USA	Assistant Professor	Full-Time, Tenure Track	Logistics/Transportation
10/2/19	Tilburg University	Tilburg, The Netherlands	Open Rank	Full-Time, Tenure Track	Supply Chain Management
10/2/19	Suffolk University	Boston, MA USA	Assistant Professor	Full-Time, Tenure Track	Information Systems, Operations Management
9/30/19	St. John's University	Queens, NY USA	Assistant/Associate Professor	Full-Time, Tenure Track	Analytical Computing, Machine Learning, Data Mining, Advanced Statistical Methods
9/30/19	DePaul University	Chicago, IL USA	Assistant Professor of Business Analytics	Full-Time, Tenure Track	Business Analytics
9/30/19	Penn State York	York, PA USA	Assistant Professor of Business Administration	Full-Time, Tenure Track	Supply Chain Management, Business Administration
9/27/19	The College at Brockport, SUNY	Brockport, NY USA	Assistant Professor of Productions & Operations Management	Full-Time 10 month, Tenure Track	Production/Operations/Supply Chain Management, Business Analytics
9/27/19	Boston University	Boston, MA USA	Full Professor of Operations & Technology Management	Full-Time, Tenure Track	Operations and Technology Management
9/26/19	The University of Tulsa	Tulsa, OK USA	Visiting Assistant Professor of Data Analytics	Full-Time	Operations Management, Business/Data Analytics
9/26/19	The University of Tulsa	Tulsa, OK USA	Assistant Professor of Data Analytics	Full-Time, Tenure Track	Operations Management, Business/Data Analytics
9/25/19	Soochow University	Suzhou, China	Open Rank	Full-Time or Part-Time	Business/Economics - All Areas
9/24/19	University of South Carolina	Columbia, SC USA	Open Rank	Full-Time, Tenure Track	Operations & Supply Chain Management
9/24/19	University of South Carolina	Columbia, SC USA	Open Rank	Full-Time, Non Tenure Track	Business Analytics, Operations & Supply Chain Management
9/23/19	The University of Alabama	Huntsville, AL USA	Assistant Professor in Business Analytics	Full-Time, Tenure Track	Business Analytics
9/20/19	The University of Scranton	Scranton, PA USA	Assistant Professor	Tenure Track	Business Analytics

POSTING DATE	INSTITUTION	LOCATION	JOB TITLE	JOB TYPE	AREA OF INTEREST
9/20/19	James Madison University	Harrisonburg, VA USA	Department Head	Full Time	Information Systems/Operations Management
9/20/19	Asper School of Business	Winnipeg, Manitoba, Canada	Assistant Professor or Associate Professor	Tenure Track	Supply Chain Management and Logistics
9/18/19	Case Western Reserve University	Cleveland, OH USA	Assistant/Associate Professor of Operations	Full-Time, Tenure Track	Operations/Supply Chain Management, Business Analytics
9/17/19	Western Kentucky University	Bowling Green, KY USA	Assistant Professor in Management	Full-Time, Tenure Track	Operations Management
9/16/19	HEC Montreal	Montreal, Quebec Canada	Open Rank	Full-Time, Tenure Track	Operations and Logistics Management
9/16/19	Bucknell University	Lewisburg, PA USA	John D and Catherine T MacArthur Professor of Data Science	Full-Time, Tenure Track	Data Science
9/13/19	Robert Morris University	Moon Township, PA USA	Assistant/Associate Professor of Management	Full-Time, Tenure Track	Business Analytics, Operations Management
9/13/19	University of Richmond	Richmond, VA USA	Assistant/Associate Professor of Management	Full-Time, Tenure Track	Operations Management, Supply Chain Management
9/12/19	Texas State University	San Marcos, TX USA	Assistant/Associate Professor of Computer Information Systems	Full-Time, Tenure Track	MIS, Information Systems, Computer Science, Data Analytics
9/12/19	Xavier University	Cincinnati, OH USA	Assistant Professor of Operations Management	Full-Time, Tenure Track	Operations Management, Supply Chain Management
9/12/19	University of Notre Dame	Notre Dame, IN USA	Assistant/Associate Teaching Professor of Business Analytics	Full-Time	Business Analytics
9/12/19	Ivey Business School, Western University	London, ON Canada	Limited Term Position in Management Science	Full-Time	Data Science, Business Analytics
9/12/19	University of Missouri St. Louis	St. Louis, MI USA	Assistant Professor of Supply Chain & Analytics	Full-Time, Tenure Track	Operations/Supply Chain Management, Logistics, Business Analytics
9/12/19	East Carolina University	Greenville, NC USA	Assistant/Associate Professor of MIS	Full-Time, Tenure Track	Business/Data Analytics, Management Information Systems
9/12/19	Embry-Riddle Aeronautical University	Daytona Beach, FL USA	Assistant/Associate Professor of Business Analytics	Full-Time, Tenure Track	Business Analytics
9/11/19	University of Oklahoma	Norman, OK USA	Assistant Professor of MIS	Full-Time, Tenure Track	Management Information Systems, Programming, Database
9/10/19	University of St. Thomas	St. Paul, MN USA	Assistant/Associate Professor of Business Analytics	Full-Time, Tenure Track	Business Analytics
9/10/19	The University of Toledo	Toledo, OH USA	Assistant Professor, IOTM	Full-Time, Tenure Track	Business Analytics, Information Systems, Operation & Supply Chain Management
9/9/19	Tulane University	New Orleans, LA USA	Lecturer in Management Science	Non-Tenure Track	Business Analytics
9/9/19	University of Nebraska	Lincoln, NE USA	Cynthia Hardin Milligan Chair of Business	Full-Time	Supply Chain Management and Analytics
9/9/19	University of Nebraska	Lincoln, NE USA	Professor of Practice in Supply Chain Management and Analytics	Full-Time	Supply Chain Management and Analytics
9/6/19	University of California	Los Angeles, CA USA	Ladder Faculty Position in Decisions, Operations and Technology Management	Full- Time, Tenure Track	Decision Sciences, Operations Management
9/6/19	Clemson University	Clemson, SC USA	Assistant Professor of Supply Chain and Operations Management	Full-Time, Tenure Track	Supply Chain and Operations Management
9/5/19	The University of Memphis	Memphis, TN USA	Assistant Professor of Supply Chain Management	Full-Time, Tenure Track	Supply Chain Management
9/5/19	University of Southern Indiana	Evansville, IN USA	Assistant Professor of Computer Information Systems	Full-Time	Computer Information Systems
9/5/19	USF Sarasota-Manatee	Sarasota, FL USA	Assistant Professor of Information Systems/Decision Science	Full-Time, Tenure Track	Information Systems, Supply Chain Management, Decision Sciences
9/5/19	The University of Kansas	Lawrence, KS USA	Assistant/Associate/Full Professor of Supply Chain Management	Full-Time, Tenure Track	Supply Chain Management

CONT. FROM PG. 37

POSTING DATE	INSTITUTION	LOCATION	JOB TITLE	JOB TYPE	AREA OF INTEREST
9/5/19	The University of Kansas	Lawrence, KS USA	Assistant/Associate/Full Professor of Business Analytics	Full-Time, Tenure Track	Business Analytics, Data Science, Data Management/Modeling
9/3/19	Missouri State University	Springfield, MO USA	Assistant Professor of Logistics & Supply Chain Management	Full-Time, Tenure Track, 9-month Appointment	Logistics & Supply Chain Management
8/30/19	Wayne State University	Detroit, MI USA	Assistant/Associate Professor of Management & Information Systems	Full-Time, Tenure Track	Information Systems
8/29/19	San Jose State University	San Jose, CA USA	Assistant/Associate/Full Professor of Industrial & Systems Engineering	Full-Time	Industrial & Systems Engineering
8/29/19	The Ohio State University	Columbus, OH USA	Assistant Professor of Operations Management	Full-Time, Tenure Track	Operations Management
8/27/19	University of Louisville	Louisville, KY USA	Operations Management Faculty	Full-Time, Non-Tenure Track	Operations Management, Managerial Analytics
8/20/19	Grand Valley State University	Grand Rapids, MI USA	Assistant Professor of Management	Full-Time, Tenure Track	Operations, Supply Chain Management, Management Information Systems
8/20/19	Ball State University	Muncie, IN USA	Assistant/Associate Professor of Logistics & Supply Chain Management	Full-Time, Tenure Track	Logistics, Supply Chain Management
8/20/19	Tulane University	New Orleans, LA USA	Assistant Professor of Management Science	Full-Time, Tenure Track	Management Science
8/19/19	University of Redlands	Redlands, CA USA	Open Rank	Full-Time, Tenure Track	Operations Management, Business Analytics
8/16/19	York University	Toronto, ON Canada	Assistant Professor of Information Systems	Full-Time, Tenure Track	Information Systems
8/16/19	York University	Toronto, ON Canada	Assistant Professor of Operations Management	Full-Time, Tenure Track	Operations Management
8/16/19	John Carroll University	Cleveland, OH USA	Assistant Professor of Supply Chain Management	Full-Time, Tenure Track	Supply Chain Management
8/15/19	Miami University	Oxford, OH USA	Assistant Professor of Information Systems	Full-Time, Tenure Track	Information Systems
8/15/19	Miami University	Oxford, OH USA	Assistant Professor of Business Analytics	Full-Time, Tenure Track	Business Analytics
8/15/19	Western Michigan University	Kalamazoo, MI USA	Assistant/Associate Professor of Computer Information Systems	Full-Time, Tenure Track	Computer Information Systems
8/14/19	Rochester Institute of Technology	Rochester, NY USA	Assistant/Associate Professor of MIS/Business Analytics	Full-Time, Tenure Track	Management Information Systems, Business Analytics
8/12/19	University of South Dakota	Vermillion, SD USA	Assistant Professor of Decision Sciences	Full-Time, Tenure Track	Analytics and Statistics
8/12/19	California State Polytechnic University Pomona	Pomona, CA USA	Assistant Professor of Technology/Operations Management	Full-Time, Tenure Track	Operations, Supply Chain Management
8/12/19	University of Arkansas	Fayetteville, AR USA	Open Rank Professor of Supply Chain Management	Full-Time, Tenure Track	Supply Chain Management, Logistics
8/9/19	SUNY New Paltz	New Paltz, NY USA	Assistant Professor of Business Analytics	Full-Time, Tenure Track	Business Analytics
8/8/19	Tulane University	New Orleans, LA USA	Professor of Practice in Business Analytics	Non-Tenure Track	Business Analytics
8/8/19	Northern Illinois University	Dekalb, IL USA	Assistant/Associate Professor of Information Systems	Full-Time, Tenure Track	Management Information Systems, Data Analytics
8/8/19	Baylor University	Waco, TX USA	Assistant Professor of Operations Management	Full-Time, Tenure Track	Operations Management/Supply Chain Management
8/8/19	Virginia Commonwealth University	Richmond, VA USA	Assistant/Associate Professor of Supply Chain Management & Analytics	Full-Time, Tenure Eligible	Supply Chain Management
8/7/19	University of Wisconsin - Whitewater	Whitewater WI, USA	Lecturer - Information Technology & Supply Chain Management	Full-Time	Supply Chain Management, Logistics, Management Information Systems
8/5/19	St. Norbert College	De Pere, WI USA	Assistant Professor of Supply Chain Management	Full-Time, Tenure Track	Operations, Supply Chain Management

CONT. FROM PG. 38

POSTING DATE	INSTITUTION	LOCATION	JOB TITLE	JOB TYPE	AREA OF INTEREST
8/1/19	University of Tennessee	Knoxville, TN USA	Assistant/Associate Professor of Supply Chain Management	Full-Time, Tenure Track	Supply Chain Management
8/1/19	Ball State University	Muncie, IN USA	Assistant Professor of Business Analytics	Full-Time, Tenure Track	Business Analytics
7/30/19	DePaul University	Chicago IL, USA	Assistant Professor	Tenure Track	Business Analytics
7/25/19	University of Alabama at Birmingham	Birmingham, AL USA	Open Rank Professor of Management	Full-Time, Tenure Track	Business/Management
7/24/19	California State University	San Bernardino, CA USA	Assistant Professor of Supply Chain, Logistics and Business Analytics	Full- Time, Tenure Track	Management Information Systems
7/8/19	Penn State Harrisburg	Middletown, PA USA	Assistant Professor of Supply Chain Management	Full-Time, Tenure Track	Supply Chain Management

2010 - CURRENT

2018–2019	M. Johnny Rungtusanatham, The Ohio State University
2017–2018	Jatinder (Jeet) Gupta, University of Alabama – Huntsville
2016–2017	Funda Sahin, University of Houston
2015–2016	Morgan Swink, Texas Christian University
2014–2015	Marc Schniederjans, Deceased
2013–2014	Maling Ebrahimpour, University of South Florida, St. Petersburg
2012–2013	E. Powell Robinson, Jr., University of Houston
2011–2012	Krishna S. Dhir, Berry College
2010–2011	G. Keong Leong, University of Nevada, Las Vegas
2009–2010	Ram Narasimhan, Michigan State University

2000 – 2009

2008–2009	Norma J. Harrison, Macquarie Graduate School of Management
2007–2008	Kenneth E. Kendall, Rutgers University
2006–2007	Mark M. Davis, Bentley University
2005–2006	Thomas E. Callarman, China Europe International Business School
2004–2005	Gary L. Ragatz, Michigan State University
2003–2004	Barbara B. Flynn, Indiana University
2002–2003	Thomas W. Jones, University of Arkansas–Fayetteville
2001–2002	F. Robert Jacobs, Indiana University–Bloomington
2000–2001	Michael J. Showalter, Florida State University
1999–2000	Lee J. Krajewski, University of Notre Dame

1990–1999

1998–1999	Terry R. Rakes, Virginia Tech
1997–1998	James R. Evans, University of Cincinnati
1996–1997	Betty J. Whitten, Deceased

1995–1996	John C. Anderson, University of Minnesota–Twin Cities
1994–1995	K. Roscoe Davis, University of Georgia
1993–1994	Larry P. Ritzman, Ohio State University
1992–1993	William C. Perkins, Indiana University–Bloomington
1991–1992	Robert E. Markland, University of South Carolina
1990–1991	Ronald J. Ebert, University of Missouri–Columbia
1989–1990	Bernard W. Taylor, III, Virginia Tech

1981 – 1989

1989–1990	Bernard W. Taylor, III, Virginia Tech
1988–1989	William L. Berry, Ohio State University
1987–1988	James M. Clapper, Aladdin TempRite
1986–1987	William R. Darden, Deceased
1985–1986	Harvey J. Brightman, Georgia State University
1984–1985	Sang M. Lee, University of Nebraska–Lincoln
1983–1984	Laurence J. Moore, Virginia Tech, Deceased
1982–1983	Linda G. Sprague, Deceased
1981–1982	Norman L. Chervany, University of Minnesota–Twin Cities
1979–1981	D. Clay Whybark, University of North Carolina–Chapel Hill

DSI FOUNDED – 1979

1978–1979	John Neter, University of Georgia
1977–1978	Charles P. Bonini, Stanford University
1976–1977	Lawrence L. Schkade, University of Texas–Arlington
1975–1976	Kenneth P. Uhl, Deceased
1974–1975	Albert J. Simone, Rochester Institute of Technology
1973–1974	Gene K. Groff, Georgia State University
1972–1973	Rodger D. Collons, Drexel University
1971–1972	George W. Summers, Deceased
1969–1971	Dennis E. Grawoig, Deceased

Adam, Everett E., Jr.
Anderson, John C.
Benson, P. George
Beranek, William
Berry, William L.
Bonini, Charles P.
Brightman, Harvey J.
Buffa, Elwood S.*
Cangelosi, Vincent*
Carter, Phillip L.
Chase, Richard B.
Chervany, Norman L.
Clapper, James M.
Rodger D. Collons
Couger, J. Daniel*
Cummings, Larry L.*
Darden, William R.*
Davis, K. Roscoe
Davis, Mark M.
Day, Ralph L.*
Digman, Lester A.
Dock, V. Thomas
Ebert, Ronald J.
Ebrahimpour, Maling
Edwards, Ward
Evans, James R.
Fetter, Robert B.
Flores, Benito E.*
Flynn, Barbara B.
Franz, Lori S.
Ghosh, Soumen
Glover, Fred W.
Gonzalez, Richard F.
Grawoig, Dennis E.*
Green, Paul E.
Groff, Gene K.
Gupta, Jatinder N.D.
Hahn, Chan K.
Hamner, W. Clay
Hayya, Jack C.

Heineke, Janelle
Hershauer, James C.
Holsapple, Clyde
Horowitz, Ira
Houck, Ernest C.*
Huber, George P.
Jacobs, F. Robert
Jones, Thomas W.
Kendall, Julie E.
Kendall, Kenneth E.
Keown, Arthur J.
Khumawala, Basheer M.
Kim, Kee Young
King, William R.
Klein, Gary
Koehler, Anne B.
Krajewski, Lee J.
LaForge, Lawrence
Latta, Carol J.*
Lee, Sang M.
Luthans, Fred
Mabert, Vincent A.
Malhotra, Manoj K.
Malhotra, Naresh K.
Markland, Robert E.
McMillan, Claude *
Miller, Jeffrey G.
Monroe, Kent B.
Moore, Laurence J.*
Moskowitz, Herbert
Narasimhan, Ram
Neter, John
Nutt, Paul C.
Olson, David L.
Perkins, William C.
Peters, William S.
Philippatos, George C.
Ragsdale, Cliff T.
Raiffa, Howard *
Rakes, Terry R.

Reinmuth, James R.
Ritzman, Larry P.
Roth, Aleda V.
Rungtusanatham, Manus (Johnny)
Sanders, Nada
Schkade, Lawrence L.
Schniederjans, Marc J.*
Schriber, Thomas J.
Schroeder, Roger G.
Simone, Albert J.
Slocum, John W., Jr.
Smunt, Timothy
Sobol, Marion G.
Sorensen, James E.
Sprague, Linda G.*
Steinberg, Earle
Summers, George W.*
Tang, Kwei

Taylor, Bernard W., III
Troutt, Marvin D.
Uhl, Kenneth P.*
Vakharia, Asoo J.
Vazsonyi, Andrew*
Vickery, Shawnee
Voss, Christopher A.
Ward, Peter T.
Wasserman, William*
Wemmerlov, Urban
Wheelwright, Steven C.
Whitten, Betty J.*
Whybark, D. Clay
Wicklund, Gary A.
Winkler, Robert L.
Woolsey, Robert E. D.
Wortman, Max S., Jr.*
Zmud, Robert W.

*Deceased

In order for the nominee to be considered, the nominator must submit in electronic form a full vita of the nominee along with a letter of nomination which highlights the contributions made by the nominee in research, teaching and/or administration and service to the Institute. Nominations must highlight the nominee's contributions and provide appropriate supporting information which may not be contained in the vita. A candidate cannot be considered for two consecutive years.

Send nominations to:

Chair of the Fellows Committee Decision Sciences Institute

C.T. Bauer College of Business 334 Melcher Hall, Suite 325

Houston, TX 77204-6021

info@decisionssciences.org

INSTITUTE CALENDAR

2019

November 23 – 25 DSI Annual Conference
INew Orleans, LA

2020

February 12-14 Southeast DSI Annual Conference
Charleston, SC

March 11-14 Southwest DSI Annual Conference
San Antonio, TX

March 26-28 Northeast Annual Conference
Boston, MA

April 7-10 Western DSI Annual Conference
Portland, OR

Visit the [DSI website](#) for details on these upcoming events.

MEMBERSHIP RATES

DSI Membership Rates							
Based on the GDP per Capita (PPP)							
All dues amounts are in United States dollars (\$)							
	MEMBER CATEGORY A	MEMBER CATEGORY B	MEMBER CATEGORY C				
MEMBER TYPE	Greater than 75th Percentile	50th - 75th Percentile	Less than 50th Percentile				
Regular	\$175	\$90	\$45				
Emeritus	\$90	\$45	\$25				
Student	\$0	\$0	\$0				
	Australia Austria Belgium Bermuda British Virgin Islands Brunei Canada Cayman Islands Denmark Falkland Islands (Islas Malvinas) Germany Gibraltar Guernsey Hong Kong Iceland Ireland Isle of Man Jersey Kuwait Liechtenstein Luxembourg Macau SAR China Monaco Netherlands Norway Qatar Saudi Arabia Singapore Sweden Switzerland United Arab Emirates United States	Andorra Bahamas, The Bahrain Cyprus Estonia European Union Faroe Islands Finland France Greenland Guam Israel Italy Japan Korea, South Lithuania Malta New Caledonia New Zealand Oman Portugal Saint Pierre and Miquelon Slovakia Slovenia Spain Taiwan Trinidad and Tobago Turks and Caicos Islands United Kingdom	Afghanistan Albania Algeria American Samoa Angola Anguilla Antigua and Barbuda Argentina Armenia Aruba Azerbaijan Bangladesh Barbados Belarus Belize Benin Bhutan Bolivia Bosnia and Herzegovina Botswana Brazil Bulgaria Burkina Faso Burma Burundi Cabo Verde Cambodia Cameroon Central African Rep. Chad Chile China Colombia Comoros	Congo, Republic of the Cook Islands Costa Rica Cote d'Ivoire Croatia Cuba Curacao Czech Republic Djibouti Dominica Dominican Republic Ecuador Egypt El Salvador Equatorial Guinea Eritrea Ethiopia Fiji French Polynesia Gabon Gambia, The Georgia Ghana Greece Guatemala Guinea Guinea-Bissau Guyana Haiti Honduras Hungary India Indonesia	Iraq Jamaica Jordan Kazakhstan Kenya Kiribati Korea, North Kosovo Kyrgyzstan Laos Latvia Lebanon Lesotho Liberia Libya Macedonia Madagascar Malawi Malaysia Maldives Mali Marshall Islands Mauritania Mauritius Mexico Micronesia Moldova Mongolia Montenegro Montserrat Morocco Mozambique Namibia Nauru	Nepal Nicaragua Niger Nigeria Niue N. Mariana Islands Pakistan Palau Panama Papua New Guinea Paraguay Peru Philippines Poland Puerto Rico Romania Russia Rwanda Saint Helena, Ascension, and Tristan da Cunha Saint Kitts and Nevis Saint Lucia Saint Vincent and the Grenadines Samoa San Marino Sao Tome and Principe Senegal Serbia Seychelles Sierra Leone Saint Maarten Solomon Islands	Somalia South Africa South Sudan Sri Lanka Sudan Suriname Swaziland Syria Tajikistan Tanzania Thailand Timor-Leste Togo Tokelau Tonga Tunisia Turkey Turkmenistan Tuvalu Uganda Ukraine Uruguay Uzbekistan Vanuatu Venezuela Vietnam Virgin Islands Wallis and Futuna West Bank Western Sahara Yemen Zambia Zimbabwe

Updated July 1,
2019